



**ELECTRONIC COPY**

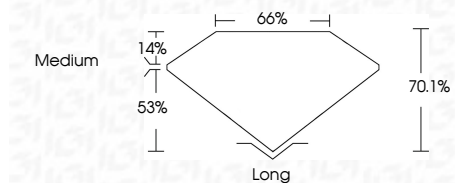
LG700514903  
Report verification at [igi.org](http://igi.org)



May 23, 2025  
IGI Report Number **LG700514903**  
Description **LABORATORY GROWN DIAMOND**  
Shape and Cutting Style **EMERALD CUT**  
Measurements **9.11 X 6.36 X 4.46 MM**

**GRADING RESULTS**

Carat Weight **2.56 CARATS**  
Color Grade **FANCY VIVID PINK**  
Clarity Grade **VS 2**



**ADDITIONAL GRADING INFORMATION**

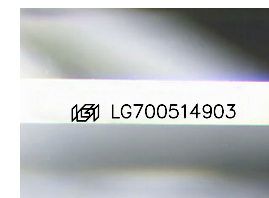
Polish **EXCELLENT**  
Symmetry **EXCELLENT**  
Fluorescence **SLIGHT**  
Inscription(s) **IGI LG700514903**  
Comments: This Laboratory Grown Diamond was created by High Pressure High Temperature (HPHT) growth process. Indications of post-growth treatment.



**IGI**

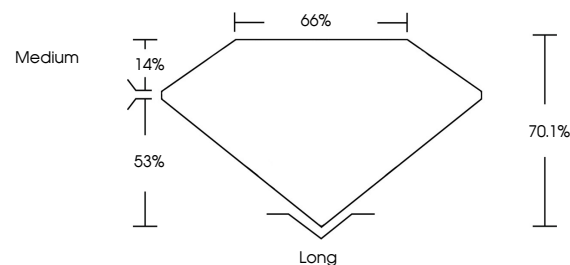
May 23, 2025  
IGI Report No LG700514903  
**EMERALD CUT**  
9.11 X 6.36 X 4.46 MM  
2.56 CARATS  
FANCY VIVID PINK  
VS 2  
70.1%  
65%  
Medium  
Long  
EXCELLENT  
EXCELLENT  
SLIGHT  
IGI LG700514903

Comments: This Laboratory Grown Diamond was created by High Pressure High Temperature (HPHT) growth process. Indications of post-growth treatment.

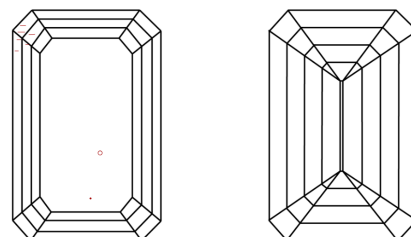


Sample Image Used

**PROPORTIONS**



**CLARITY CHARACTERISTICS**



**KEY TO SYMBOLS**

Red symbols indicate internal characteristics.  
Green symbols indicate external characteristics.

**COLOR**

D E F G H I J Faint Very Light Light

**CLARITY**

IF	VS <sup>1-2</sup>	VS <sup>1-2</sup>	SI <sup>1-2</sup>	I <sup>1-3</sup>
Internally Flawless	Very Very Slightly Included	Very Slightly Included	Slightly Included	Included

