



**ELECTRONIC COPY**

LG700514882  
Report verification at [igi.org](http://igi.org)



May 23, 2025

IGI Report Number **LG700514882**

Description **LABORATORY GROWN DIAMOND**

Shape and Cutting Style **ROUND BRILLIANT**

Measurements **6.39 - 6.44 X 3.92 MM**

**GRADING RESULTS**

Carat Weight **1.01 CARAT**

Color Grade **FANCY VIVID BLUE**

Clarity Grade **VVS 2**

Cut Grade **VERY GOOD**

May 23, 2025  
IGI Report Number **LG700514882**  
Description **LABORATORY GROWN DIAMOND**  
Shape and Cutting Style **ROUND BRILLIANT**  
Measurements **6.39 - 6.44 X 3.92 MM**

**GRADING RESULTS**

Carat Weight **1.01 CARAT**

Color Grade **FANCY VIVID BLUE**

Clarity Grade **VVS 2**

Cut Grade **VERY GOOD**

**ADDITIONAL GRADING INFORMATION**

Polish **VERY GOOD**

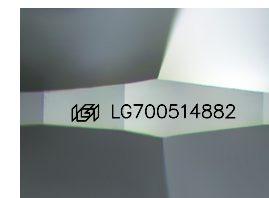
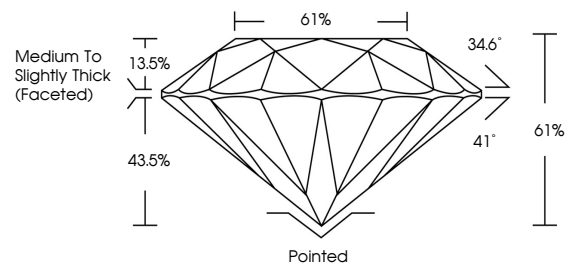
Symmetry **GOOD**

Fluorescence **NONE**

Inscription(s) **LG700514882**

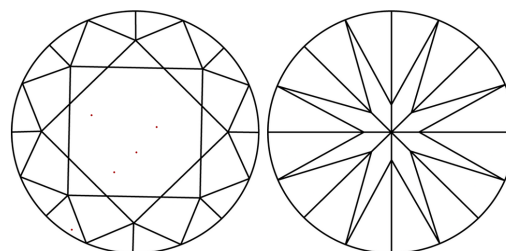
Comments: This Laboratory Grown Diamond was created by Chemical Vapor Deposition (CVD) growth process.  
Indications of post-growth treatment.

**PROPORTIONS**



Sample Image Used

**CLARITY CHARACTERISTICS**



**KEY TO SYMBOLS**

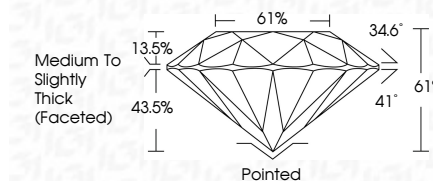
Red symbols indicate internal characteristics.  
Green symbols indicate external characteristics.

**COLOR**

D E F G H I J Faint Very Light Light

**CLARITY**

IF	VS <sup>1-2</sup>	VS <sup>1-2</sup>	SI <sup>1-2</sup>	I <sup>1-3</sup>
Internally Flawless	Very Very Slightly Included	Very Slightly Included	Slightly Included	Included



**ADDITIONAL GRADING INFORMATION**

Polish **VERY GOOD**

Symmetry **GOOD**

Fluorescence **NONE**

Inscription(s) **LG700514882**

Comments: This Laboratory Grown Diamond was created by Chemical Vapor Deposition (CVD) growth process.  
Indications of post-growth treatment.



May 23, 2025  
IGI Report No LG700514882  
**ROUND BRILLIANT**  
6.39 - 6.44 X 3.92 MM  
1.01 CARAT  
FANCY VIVID BLUE  
Color Grade  
VVS 2  
VERY GOOD  
Depth 61%  
Table 61%  
Girdle Medium To Slightly Thick (Faceted)  
Culet Pointed  
Polish VERY GOOD  
Symmetry GOOD  
Fluorescence NONE  
Inscription(s) LG700514882  
Comments: This Laboratory Grown Diamond was created by Chemical Vapor Deposition (CVD) growth process.  
Indications of post-growth treatment.