



ELECTRONIC COPY

LG700510960
Report verification at igi.org



May 24, 2025

IGI Report Number **LG700510960**

Description **LABORATORY GROWN DIAMOND**

Shape and Cutting Style **CUT CORNERED
RECTANGULAR MODIFIED
BRILLIANT**

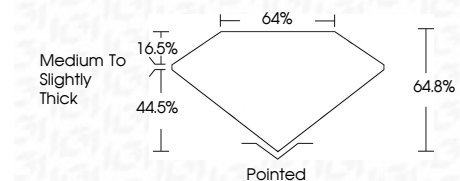
Measurements **7.21 X 4.95 X 3.21 MM**

GRADING RESULTS

Carat Weight **1.03 CARAT**

Color Grade **D**

Clarity Grade **VVS 1**



ADDITIONAL GRADING INFORMATION

Polish **EXCELLENT**

Symmetry **EXCELLENT**

Fluorescence **NONE**

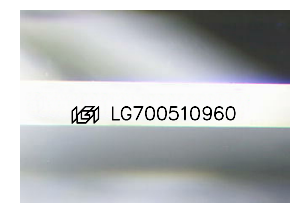
Inscription(s) **IGI LG700510960**

Comments: This Laboratory Grown Diamond was created by Chemical Vapor Deposition (CVD) growth process. Type IIa



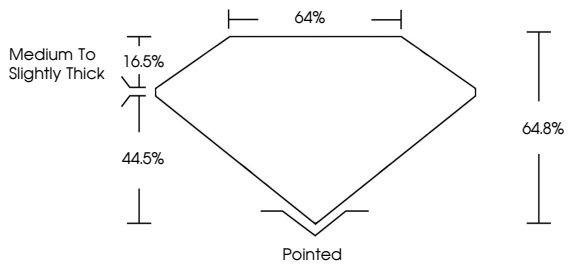
May 24, 2025	IGI Report No LG700510960	CUT CORNERED RECT. MODIFIED BRILLIANT
7.21 X 4.95 X 3.21 MM	1.03 CARAT	D
Color Grade	VVS 1	64.8%
Depth	44.5%	16.5%
Table	Medium to Slightly Thick	Pointed
Grailes	EXCELLENT	EXCELLENT
Culet	NONE	NONE
Polish	EXCELLENT	EXCELLENT
Symmetry	EXCELLENT	EXCELLENT
Fluorescence	NONE	NONE
Inscription(s)	IGI LG700510960	

Comments: This Laboratory Grown Diamond was created by Chemical Vapor Deposition (CVD) growth process. Type IIa

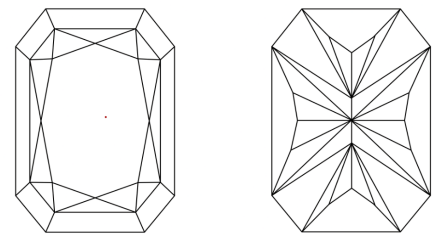


Sample Image Used

PROPORTIONS



CLARITY CHARACTERISTICS



KEY TO SYMBOLS

Red symbols indicate internal characteristics.
Green symbols indicate external characteristics.

COLOR

D	E	F	G	H	I	J	Faint	Very Light	Light
---	---	---	---	---	---	---	-------	------------	-------

CLARITY

IF	VS ¹⁻²	VS ¹⁻²	SI ¹⁻²	I ¹⁻³
Internally Flawless	Very Very Slightly Included	Very Slightly Included	Slightly Included	Included

