



ELECTRONIC COPY

LG700508939
Report verification at igi.org



May 22, 2025
IGI Report Number **LG700508939**
Description **LABORATORY GROWN DIAMOND**
Shape and Cutting Style **SQUARE CUSHION MODIFIED BRILLIANT**
Measurements **7.22 X 6.89 X 4.69 MM**
GRADING RESULTS
Carat Weight **2.05 CARATS**
Color Grade **FANCY INTENSE YELLOW**
Clarity Grade **VVS 2**

LABORATORY GROWN DIAMOND REPORT

May 22, 2025
IGI Report Number **LG700508939**
Description **LABORATORY GROWN DIAMOND**
Shape and Cutting Style **SQUARE CUSHION MODIFIED BRILLIANT**
Measurements **7.22 X 6.89 X 4.69 MM**

GRADING RESULTS

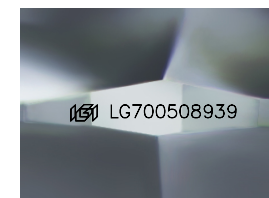
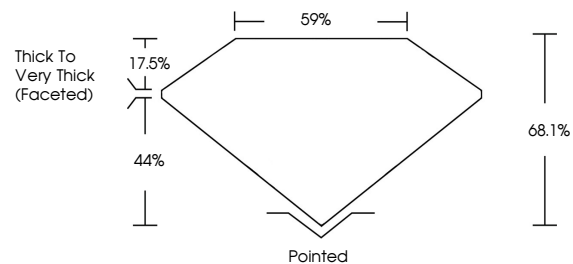
Carat Weight **2.05 CARATS**
Color Grade **FANCY INTENSE YELLOW**
Clarity Grade **VVS 2**

ADDITIONAL GRADING INFORMATION

Polish **EXCELLENT**
Symmetry **EXCELLENT**
Fluorescence **NONE**
Inscription(s) **IGI LG700508939**

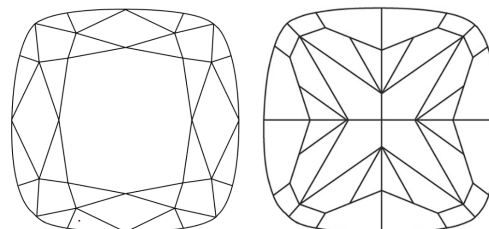
Comments: This Laboratory Grown Diamond was created by Chemical Vapor Deposition (CVD) growth process.

PROPORTIONS



Sample Image Used

CLARITY CHARACTERISTICS



KEY TO SYMBOLS

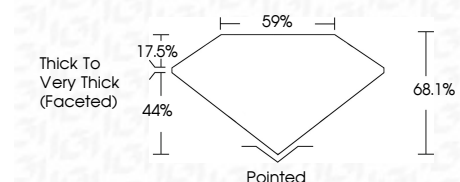
Red symbols indicate internal characteristics.
Green symbols indicate external characteristics.

COLOR

D E F G H I J Faint Very Light Light

CLARITY

IF	VS ¹⁻²	VS ¹⁻²	SI ¹⁻²	I ¹⁻³
Internally Flawless	Very Very Slightly Included	Very Slightly Included	Slightly Included	Included



ADDITIONAL GRADING INFORMATION

Polish **EXCELLENT**
Symmetry **EXCELLENT**
Fluorescence **NONE**
Inscription(s) **IGI LG700508939**
Comments: This Laboratory Grown Diamond was created by Chemical Vapor Deposition (CVD) growth process.



May 22, 2025
IGI Report No. LG700508939
SQUARE CUSHION MODIFIED BRILLIANT
2.05 CARATS
Carat Weight
Color Grade **FANCY INTENSE YELLOW**
Clarity Grade **VVS 2**
Table **68.1%**
Girdle **59%**
Thick to Very Thick (Faceted)
Culet **Pointed**
Polish **EXCELLENT**
Symmetry **EXCELLENT**
Fluorescence **NONE**
Inscription(s) **IGI LG700508939**
Comments: This Laboratory Grown Diamond was created by Chemical Vapor Deposition (CVD) growth process.