



ELECTRONIC COPY

LG700506685
Report verification at igi.org



May 10, 2025
IGI Report Number **LG700506685**
Description **LABORATORY GROWN DIAMOND**
Shape and Cutting Style **CUSHION MODIFIED BRILLIANT**
Measurements **6.17 X 5.47 X 3.76 MM**
GRADING RESULTS
Carat Weight **1.08 CARAT**
Color Grade **FANCY INTENSE GREEN**
Clarity Grade **VVS 2**

LABORATORY GROWN DIAMOND REPORT

May 10, 2025
IGI Report Number **LG700506685**
Description **LABORATORY GROWN DIAMOND**
Shape and Cutting Style **CUSHION MODIFIED BRILLIANT**
Measurements **6.17 X 5.47 X 3.76 MM**

GRADING RESULTS

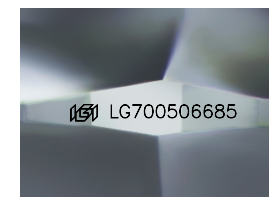
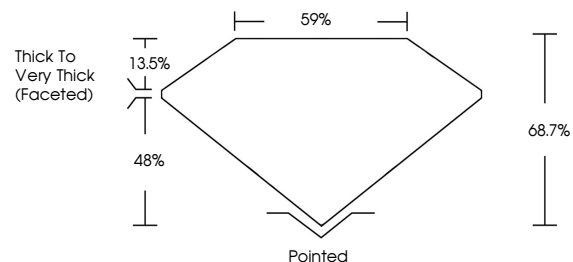
Carat Weight **1.08 CARAT**
Color Grade **FANCY INTENSE GREEN**
Clarity Grade **VVS 2**

ADDITIONAL GRADING INFORMATION

Polish **EXCELLENT**
Symmetry **EXCELLENT**
Fluorescence **NONE**
Inscription(s) **LG700506685**

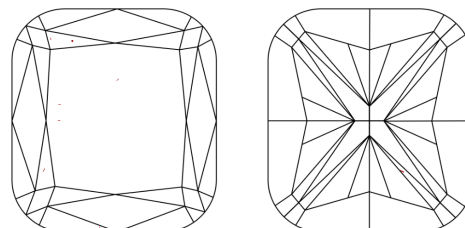
Comments: This Laboratory Grown Diamond was created by High Pressure High Temperature (HPHT) growth process.
Indications of post-growth treatment.

PROPORTIONS



Sample Image Used

CLARITY CHARACTERISTICS



KEY TO SYMBOLS

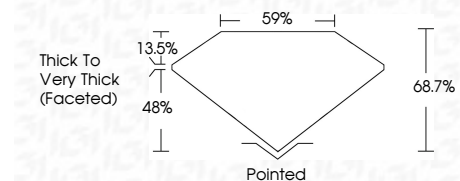
Red symbols indicate internal characteristics.
Green symbols indicate external characteristics.

COLOR

D E F G H I J Faint Very Light Light

CLARITY

IF	VS ¹⁻²	VVS ¹⁻²	S ¹⁻²	I ¹⁻³
Internally Flawless	Very Very Slightly Included	Very Slightly Included	Slightly Included	Included



ADDITIONAL GRADING INFORMATION

Polish **EXCELLENT**
Symmetry **EXCELLENT**
Fluorescence **NONE**
Inscription(s) **LG700506685**
Comments: This Laboratory Grown Diamond was created by High Pressure High Temperature (HPHT) growth process.
Indications of post-growth treatment.



IGI



May 10, 2025
IGI Report No **LG700506685**
CUSHION MODIFIED BRILLIANT
6.17 X 5.47 X 3.76 MM
1.08 CARAT
FANCY INTENSE GREEN
VVS 2
68.7%
48%
Thick to Very Thick (Faceted)
Pointed
EXCELLENT
EXCELLENT
NONE
None
 LG700506685

Comments: This Laboratory Grown Diamond was created by High Pressure High Temperature (HPHT) growth process.
Indications of post-growth treatment.