



ELECTRONIC COPY

LG698591811
Report verification at igi.org



April 24, 2025

IGI Report Number **LG698591811**

Description **LABORATORY GROWN DIAMOND**

Shape and Cutting Style **EMERALD CUT**

Measurements **7.34 X 4.72 X 3.14 MM**

GRADING RESULTS

Carat Weight **1.13 CARAT**

Color Grade **FANCY BROWN PINK**

Clarity Grade **VS 2**

April 24, 2025
IGI Report Number **LG698591811**
Description **LABORATORY GROWN DIAMOND**
Shape and Cutting Style **EMERALD CUT**
Measurements **7.34 X 4.72 X 3.14 MM**

GRADING RESULTS

Carat Weight **1.13 CARAT**

Color Grade **FANCY BROWN PINK**

Clarity Grade **VS 2**

ADDITIONAL GRADING INFORMATION

Polish **EXCELLENT**

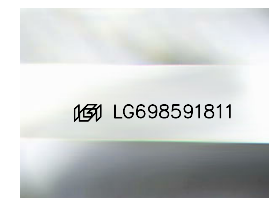
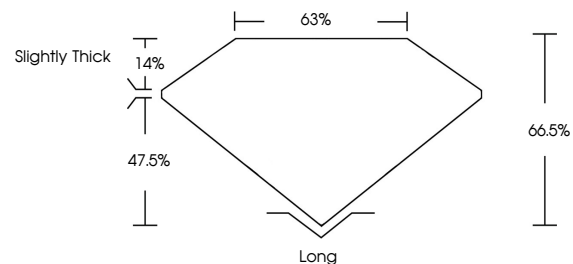
Symmetry **EXCELLENT**

Fluorescence **SLIGHT**

Inscription(s) **LG698591811**

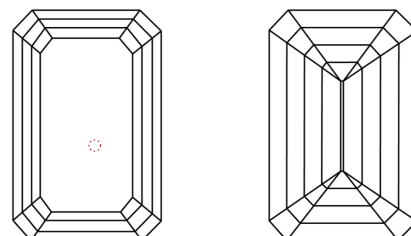
Comments: This Laboratory Grown Diamond was created by Chemical Vapor Deposition (CVD) growth process. Indications of post-growth treatment.

PROPORTIONS



Sample Image Used

CLARITY CHARACTERISTICS



KEY TO SYMBOLS

Red symbols indicate internal characteristics.
Green symbols indicate external characteristics.

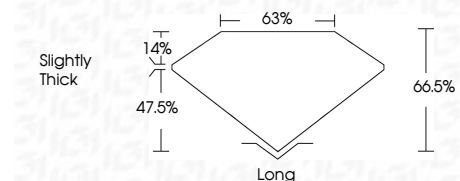
COLOR

D E F G H I J Faint Very Light Light

CLARITY

IF WS¹⁻² VS¹⁻² SI¹⁻² I¹⁻³

Internally Flawless Very Very Slightly Included Very Slightly Included Slightly Included Included



ADDITIONAL GRADING INFORMATION

Polish **EXCELLENT**

Symmetry **EXCELLENT**

Fluorescence **SLIGHT**

Inscription(s) **LG698591811**

Comments: This Laboratory Grown Diamond was created by Chemical Vapor Deposition (CVD) growth process. Indications of post-growth treatment.



IGI



April 24, 2025
IGI Report No. **LG698591811**
EMERALD CUT
7.34 X 4.72 X 3.14 MM
Carat Weight **1.13 CARAT**
Color Grade **FANCY BROWN PINK**
Clarity Grade **VS 2**
Depth **66.5%**
Table **63%**
Girdle **Slightly Thick**
Culet **Long**
Polish **EXCELLENT**
Symmetry **EXCELLENT**
Fluorescence **SLIGHT**
Inscription(s) **LG698591811**
Comments: This Laboratory Grown Diamond was created by Chemical Vapor Deposition (CVD) growth process. Indications of post-growth treatment.