



**INTERNATIONAL  
GEMOLOGICAL  
INSTITUTE**

**ELECTRONIC COPY**

**LABORATORY GROWN DIAMOND REPORT**

April 30, 2025  
 IGI Report Number **LG698573376**  
 Description **LABORATORY GROWN DIAMOND**  
 Shape and Cutting Style **ROUND MIXED CUT**  
 Measurements **5.97 - 5.95 X 3.66 MM**

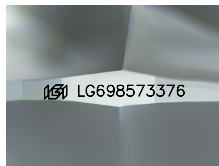
**GRADING RESULTS**

Carat Weight **0.85 CARAT**  
 Color Grade **FANCY VIVID GREEN**  
 Clarity Grade **VS 1**

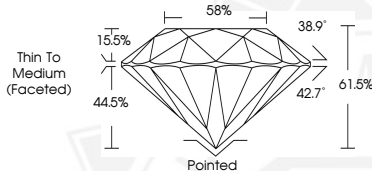
**ADDITIONAL GRADING INFORMATION**

Polish **VERY GOOD**  
 Symmetry **VERY GOOD**  
 Fluorescence **NONE**  
 Inscription(s) **IGI LG698573376**

Comments: This Laboratory Grown Diamond was created by  
 Chemical Vapor Deposition (CVD) growth process.  
 Indications of post-growth treatment.



Sample Image Used



April 30, 2025  
 IGI Report Number **LG698573376**  
 ROUND MIXED CUT  
 LABORATORY GROWN DIAMOND  
 5.97 - 5.95 X 3.66 MM  
 Carat Weight **0.85 CARAT**  
 Color Grade **FANCY VIVID GREEN**  
 Clarity Grade **VS 1**  
 Polish **VERY GOOD**  
 Symmetry **VERY GOOD**  
 Fluorescence **NONE**  
 Inscription(s) **IGI LG698573376**

Comments: This Laboratory Grown  
 Diamond was created by  
 Chemical Vapor Deposition (CVD)  
 growth process. Indications of  
 post-growth treatment.



April 30, 2025  
 IGI Report Number **LG698573376**  
 ROUND MIXED CUT  
 LABORATORY GROWN DIAMOND  
 5.97 - 5.95 X 3.66 MM  
 Carat Weight **0.85 CARAT**  
 Color Grade **FANCY VIVID GREEN**  
 Clarity Grade **VS 1**  
 Polish **VERY GOOD**  
 Symmetry **VERY GOOD**  
 Fluorescence **NONE**  
 Inscription(s) **IGI LG698573376**

Comments: This Laboratory Grown  
 Diamond was created by  
 Chemical Vapor Deposition (CVD)  
 growth process. Indications of  
 post-growth treatment.

THIS DOCUMENT WAS PRODUCED WITH THE FOLLOWING SECURITY MEASURES: SPECIAL DOCUMENT PAPER, INK SCREENS, WATERMARK, BACKGROUND DESIGN, HOLOGRAM AND OTHER SECURITY FEATURES NOT LISTED AND DO EXCEED DOCUMENT SECURITY INDUSTRY GUIDELINES.

For terms & conditions and to verify this report, please visit [www.igi.org](http://www.igi.org)