



ELECTRONIC COPY

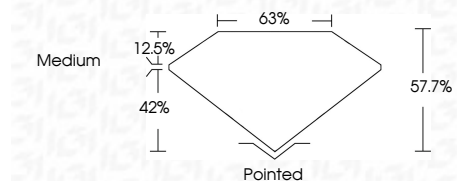
LG698568419
Report verification at igi.org



April 25, 2025
IGI Report Number **LG698568419**
Description **LABORATORY GROWN DIAMOND**
Shape and Cutting Style **OCTAGONAL STEP CUT**
Measurements **6.34 X 6.31 X 3.64 MM**

GRADING RESULTS

Carat Weight **1.04 CARAT**
Color Grade **D**
Clarity Grade **VVS 1**

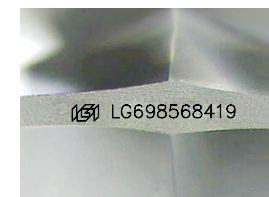


ADDITIONAL GRADING INFORMATION

Polish **EXCELLENT**
Symmetry **EXCELLENT**
Fluorescence **NONE**
Inscription(s) **IGI LG698568419**
Comments: This Laboratory Grown Diamond was created by Chemical Vapor Deposition (CVD) growth process. Type IIa

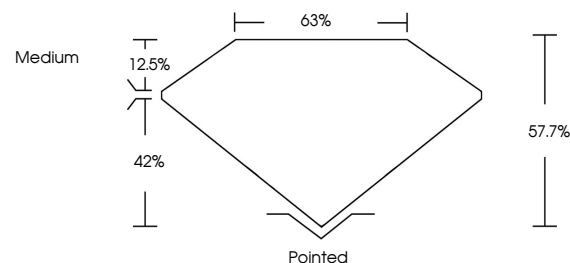


April 25, 2025
IGI Report No LG698568419
OCTAGONAL STEP CUT
6.34 X 6.31 X 3.64 MM
1.04 CARAT
D
VVS 1
57.7%
63%
Medium
Pointed
EXCELLENT
EXCELLENT
NONE
IGI LG698568419
Comments: This Laboratory Grown Diamond was created by Chemical Vapor Deposition (CVD) growth process. Type IIa

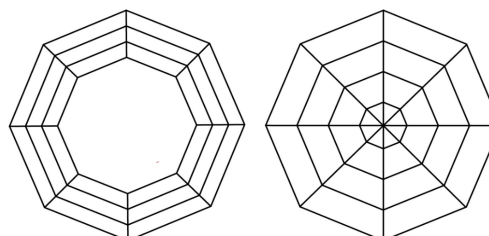


Sample Image Used

PROPORTIONS



CLARITY CHARACTERISTICS



KEY TO SYMBOLS

Red symbols indicate internal characteristics.
Green symbols indicate external characteristics.

COLOR

D E F G H I J Faint Very Light Light

CLARITY

IF	WS ¹⁻²	VS ¹⁻²	SI ¹⁻²	I ¹⁻³
Internally Flawless	Very Very Slightly Included	Very Slightly Included	Slightly Included	Included

