



**ELECTRONIC COPY**

LG698564156  
Report verification at igi.org



April 18, 2025

IGI Report Number **LG698564156**

Description **LABORATORY GROWN DIAMOND**

Shape and Cutting Style **CUT CORNERED  
RECTANGULAR MODIFIED  
BRILLIANT**

Measurements **11.33 X 7.81 X 5.29 MM**

**GRADING RESULTS**

Carat Weight **4.10 CARATS**

Color Grade **F**

Clarity Grade **SI 1**

**LABORATORY GROWN DIAMOND REPORT**

April 18, 2025

IGI Report Number **LG698564156**

Description **LABORATORY GROWN DIAMOND**

Shape and Cutting Style **CUT CORNERED RECTANGULAR  
MODIFIED BRILLIANT**

Measurements **11.33 X 7.81 X 5.29 MM**

**GRADING RESULTS**

Carat Weight **4.10 CARATS**

Color Grade **F**

Clarity Grade **SI 1**

**ADDITIONAL GRADING INFORMATION**

Polish **EXCELLENT**

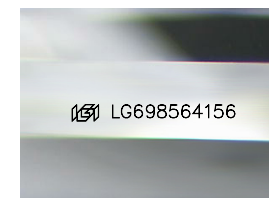
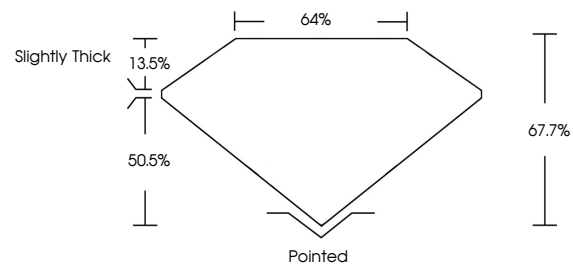
Symmetry **EXCELLENT**

Fluorescence **NONE**

Inscription(s) **IGI LG698564156**

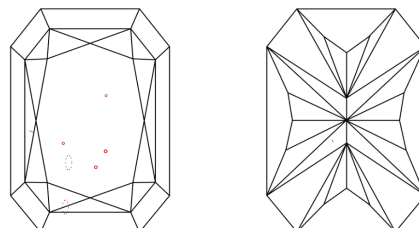
Comments: This Laboratory Grown Diamond was created by Chemical Vapor Deposition (CVD) growth process. Type IIa

**PROPORTIONS**



Sample Image Used

**CLARITY CHARACTERISTICS**



**KEY TO SYMBOLS**

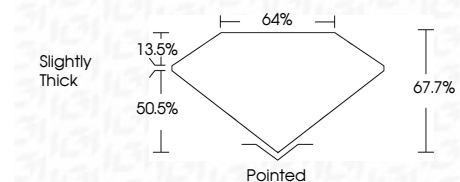
Red symbols indicate internal characteristics.  
Green symbols indicate external characteristics.

**COLOR**

D E F G H I J Faint Very Light Light

**CLARITY**

IF	VS <sup>1-2</sup>	VS <sup>1-2</sup>	SI <sup>1-2</sup>	I <sup>1-3</sup>
Internally Flawless	Very Very Slightly Included	Very Slightly Included	Slightly Included	Included



**ADDITIONAL GRADING INFORMATION**

Polish **EXCELLENT**

Symmetry **EXCELLENT**

Fluorescence **NONE**

Inscription(s) **IGI LG698564156**

Comments: This Laboratory Grown Diamond was created by Chemical Vapor Deposition (CVD) growth process. Type IIa



**IGI**



April 18, 2025  
IGI Report No LG698564156  
CUT CORNERED RECT. MODIFIED BRILLIANT

11.33 X 7.81 X 5.29 MM

4.10 CARATS  
Color Grade F  
Clarity Grade SI 1  
Depth 67.7%  
Table 64%  
Girdle Slightly Thick

Culet Pointed  
Polish EXCELLENT  
Symmetry EXCELLENT  
Fluorescence NONE  
Inscription(s) IGI LG698564156

Comments: This Laboratory Grown Diamond was created by Chemical Vapor Deposition (CVD) growth process. Type IIa