



**ELECTRONIC COPY**

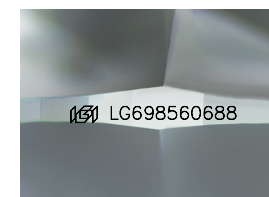
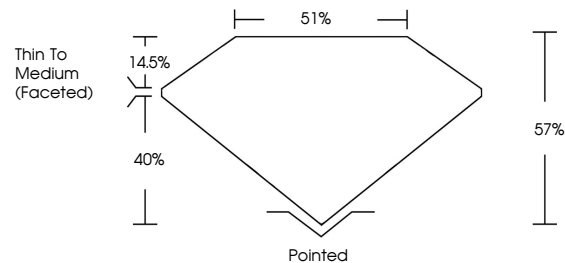
LG698560688  
Report verification at igi.org



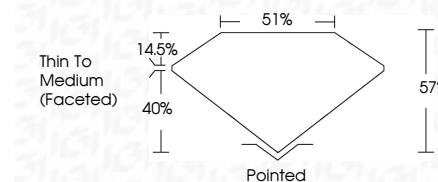
May 2, 2025  
IGI Report Number **LG698560688**  
Description **LABORATORY GROWN DIAMOND**  
Shape and Cutting Style **CUSHION MODIFIED BRILLIANT**  
Measurements **7.87 X 5.56 X 3.17 MM**  
**GRADING RESULTS**  
Carat Weight **1.04 CARAT**  
Color Grade **FANCY DEEP PINK**  
Clarity Grade **SI 1**

May 2, 2025  
IGI Report Number **LG698560688**  
Description **LABORATORY GROWN DIAMOND**  
Shape and Cutting Style **CUSHION MODIFIED BRILLIANT**  
Measurements **7.87 X 5.56 X 3.17 MM**  
**GRADING RESULTS**  
Carat Weight **1.04 CARAT**  
Color Grade **FANCY DEEP PINK**  
Clarity Grade **SI 1**

**PROPORTIONS**



Sample Image Used



**ADDITIONAL GRADING INFORMATION**

Polish **VERY GOOD**  
Symmetry **VERY GOOD**  
Fluorescence **SLIGHT**  
Inscription(s) **IGI LG698560688**

Comments: This Laboratory Grown Diamond was created by Chemical Vapor Deposition (CVD) growth process. Indications of post-growth treatment.

**ADDITIONAL GRADING INFORMATION**

Polish **VERY GOOD**  
Symmetry **VERY GOOD**  
Fluorescence **SLIGHT**  
Inscription(s) **IGI LG698560688**

Comments: This Laboratory Grown Diamond was created by Chemical Vapor Deposition (CVD) growth process. Indications of post-growth treatment.

**COLOR**

D E F G H I J Faint Very Light Light

**CLARITY**

IF VS<sup>1-2</sup> VS<sup>1-2</sup> SI<sup>1-2</sup> I<sup>1-3</sup>

Internally Flawless Very Very Slightly Included Very Slightly Included Slightly Included Included



**IGI**



May 2, 2025  
IGI Report No **LG698560688**  
**CUSHION MODIFIED BRILLIANT**

**1.04 CARAT**  
**FANCY DEEP PINK**  
SI 1  
7.87 X 5.56 X 3.17 MM  
Color Grade  
Depth 57%  
Table 51%  
Girdle  
Thin To Medium (Faceted)  
Culet  
Polish  
Symmetry  
Fluorescence  
Inscription(s)  
**VERY GOOD**  
**VERY GOOD**  
**SLIGHT**  
**IGI LG698560688**

Comments: This Laboratory Grown Diamond was created by Chemical Vapor Deposition (CVD) growth process. Indications of post-growth treatment.