



ELECTRONIC COPY

LG698560580
Report verification at igi.org



May 2, 2025

IGI Report Number **LG698560580**

Description **LABORATORY GROWN DIAMOND**

Shape and Cutting Style **ROUND BRILLIANT**

Measurements **7.97 - 8.00 X 4.71 MM**

GRADING RESULTS

Carat Weight **1.82 CARAT**

Color Grade **FANCY VIVID BROWNISH ORANGE**

Clarity Grade **VS 2**

Cut Grade **IDEAL**

May 2, 2025
IGI Report Number **LG698560580**
Description **LABORATORY GROWN DIAMOND**
Shape and Cutting Style **ROUND BRILLIANT**
Measurements **7.97 - 8.00 X 4.71 MM**

GRADING RESULTS

Carat Weight **1.82 CARAT**

Color Grade **FANCY VIVID BROWNISH ORANGE**

Clarity Grade **VS 2**

Cut Grade **IDEAL**

ADDITIONAL GRADING INFORMATION

Polish **EXCELLENT**

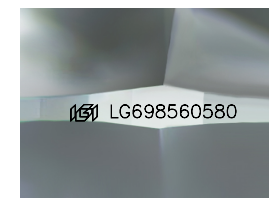
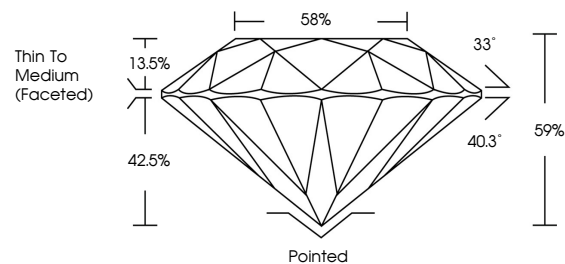
Symmetry **EXCELLENT**

Fluorescence **NONE**

Inscription(s) **IGI LG698560580**

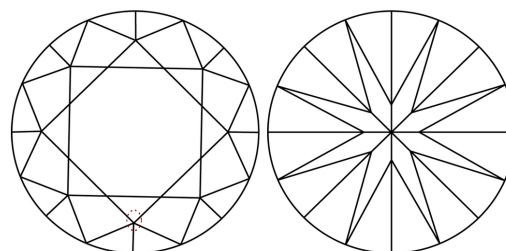
Comments: This Laboratory Grown Diamond was created by High Pressure High Temperature (HPHT) growth process.
Indications of post-growth treatment.

PROPORTIONS



Sample Image Used

CLARITY CHARACTERISTICS



KEY TO SYMBOLS

Red symbols indicate internal characteristics.
Green symbols indicate external characteristics.

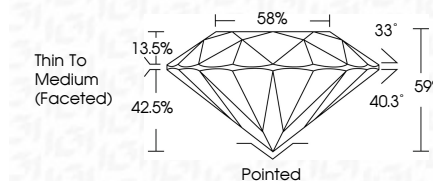
COLOR

D E F G H I J Faint Very Light Light

CLARITY

IF VS¹⁻² VS¹⁻² SI¹⁻² I¹⁻³

Internally Flawless Very Very Slightly Included Very Slightly Included Slightly Included Included



ADDITIONAL GRADING INFORMATION

Polish **EXCELLENT**

Symmetry **EXCELLENT**

Fluorescence **NONE**

Inscription(s) **IGI LG698560580**

Comments: This Laboratory Grown Diamond was created by High Pressure High Temperature (HPHT) growth process.
Indications of post-growth treatment.



IGI



May 2, 2025	IGI Report No LG698560580	1.82 CARAT	Pointed
ROUND BRILLIANT	7.97 - 8.00 X 4.71 MM	FANCY VIVID BROWNISH ORANGE	EXCELLENT
		VS 2	EXCELLENT
		IDEAL	NONE
		59%	None
		58%	None
		Thin To Medium (Faceted)	None
			IGI LG698560580

Comments: This Laboratory Grown Diamond was created by High Pressure High Temperature (HPHT) growth process. Indications of post-growth treatment.