



**ELECTRONIC COPY**

LG698558190  
Report verification at igi.org



April 18, 2025  
IGI Report Number **LG698558190**  
Description **LABORATORY GROWN DIAMOND**  
Shape and Cutting Style **RECTANGULAR CUSHION  
MODIFIED BRILLIANT**  
Measurements **10.11 X 6.52 X 3.76 MM**  
**GRADING RESULTS**  
Carat Weight **2.04 CARATS**  
Color Grade **G**  
Clarity Grade **VS 1**

**LABORATORY GROWN DIAMOND REPORT**

April 18, 2025  
IGI Report Number **LG698558190**  
Description **LABORATORY GROWN DIAMOND**  
Shape and Cutting Style **RECTANGULAR CUSHION  
MODIFIED BRILLIANT**  
Measurements **10.11 X 6.52 X 3.76 MM**

**GRADING RESULTS**

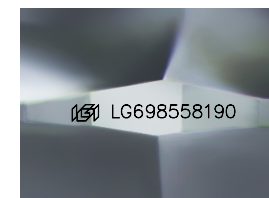
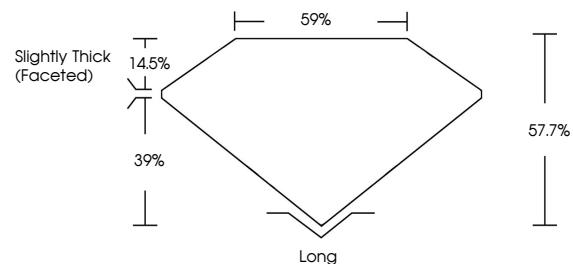
Carat Weight **2.04 CARATS**  
Color Grade **G**  
Clarity Grade **VS 1**

**ADDITIONAL GRADING INFORMATION**

Polish **EXCELLENT**  
Symmetry **EXCELLENT**  
Fluorescence **NONE**  
Inscription(s) **IGI LG698558190**

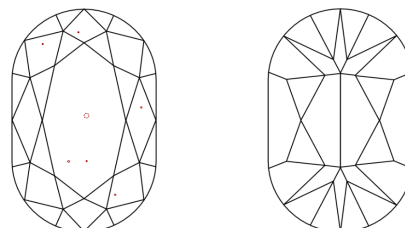
Comments: This Laboratory Grown Diamond was created by Chemical Vapor Deposition (CVD) growth process.  
Type IIa

**PROPORTIONS**



Sample Image Used

**CLARITY CHARACTERISTICS**



**KEY TO SYMBOLS**

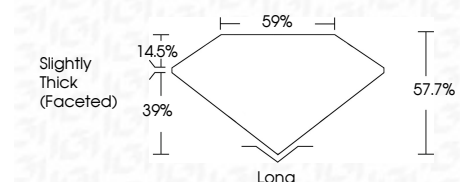
Red symbols indicate internal characteristics.  
Green symbols indicate external characteristics.

**COLOR**

D E F G H I J Faint Very Light Light

**CLARITY**

IF	VS <sup>1-2</sup>	VS <sup>1-2</sup>	SI <sup>1-2</sup>	I <sup>1-3</sup>
Internally Flawless	Very Very Slightly Included	Very Slightly Included	Slightly Included	Included



**ADDITIONAL GRADING INFORMATION**

Polish **EXCELLENT**  
Symmetry **EXCELLENT**  
Fluorescence **NONE**  
Inscription(s) **IGI LG698558190**  
Comments: This Laboratory Grown Diamond was created by Chemical Vapor Deposition (CVD) growth process.  
Type IIa



**IGI**



April 18, 2025  
IGI Report No **LG698558190**  
**RECTANGULAR CUSHION MODIFIED BRILLIANT**  
**10.11 X 6.52 X 3.76 MM**  
Carat Weight **2.04 CARATS**  
Color Grade **G**  
Clarity Grade **VS 1**  
Depth **57.7%**  
Table **59%**  
Girdle **Slightly Thick (Faceted)**  
Culet **Long**  
Polish **EXCELLENT**  
Symmetry **EXCELLENT**  
Fluorescence **NONE**  
Inscription(s) **IGI LG698558190**  
Comments: This Laboratory Grown Diamond was created by Chemical Vapor Deposition (CVD) growth process.  
Type IIa