



**INTERNATIONAL
GEMOLOGICAL
INSTITUTE**

LABORATORY GROWN DIAMOND REPORT

April 18, 2025
 IGI Report Number **LG698557245**
 Description **LABORATORY GROWN DIAMOND**
 Shape and Cutting Style **ROUND BRILLIANT**
 Measurements **3.64 - 3.67 X 2.29 MM**

GRADING RESULTS

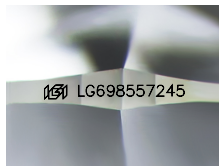
Carat Weight **0.19 CARAT**
 Color Grade **D**
 Clarity Grade **VVS 2**
 Cut Grade **EXCELLENT**

ADDITIONAL GRADING INFORMATION

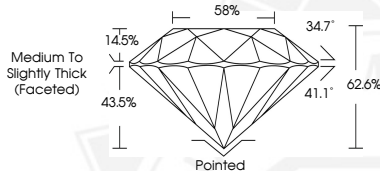
Polish **VERY GOOD**
 Symmetry **EXCELLENT**
 Fluorescence **NONE**
 Inscription(s) **IGI LG698557245**

Comments: This Laboratory Grown Diamond was created by
 Chemical Vapor Deposition (CVD) growth process.
 Type IIa

ELECTRONIC COPY



Sample Image Used



April 18, 2025
 IGI Report Number **LG698557245**
 ROUND BRILLIANT
 LABORATORY GROWN DIAMOND
3.64 - 3.67 X 2.29 MM
 Carat Weight **0.19 CARAT**
 Color Grade **D**
 Clarity Grade **VVS 2**
 Cut Grade **EXCELLENT**
 Polish **VERY GOOD**
 Symmetry **EXCELLENT**
 Fluorescence **NONE**
 Inscription(s) **IGI LG698557245**

Comments: This Laboratory Grown
 Diamond was created by
 Chemical Vapor Deposition (CVD)
 growth process. Type IIa



April 18, 2025
 IGI Report Number **LG698557245**
 ROUND BRILLIANT
 LABORATORY GROWN DIAMOND
3.64 - 3.67 X 2.29 MM
 Carat Weight **0.19 CARAT**
 Color Grade **D**
 Clarity Grade **VVS 2**
 Cut Grade **EXCELLENT**
 Polish **VERY GOOD**
 Symmetry **EXCELLENT**
 Fluorescence **NONE**
 Inscription(s) **IGI LG698557245**

Comments: This Laboratory Grown
 Diamond was created by
 Chemical Vapor Deposition (CVD)
 growth process. Type IIa

THIS DOCUMENT WAS PRODUCED WITH THE FOLLOWING SECURITY MEASURES: SPECIAL DOCUMENT PAPER, INK SCREENS, WATERMARK, BACKGROUND DESIGN, HOLOGRAM AND OTHER SECURITY FEATURES NOT LISTED AND DO EXCEED DOCUMENT SECURITY INDUSTRY GUIDELINES.

For terms & conditions and to verify this report, please visit www.igi.org