



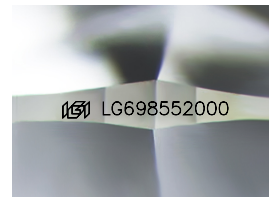
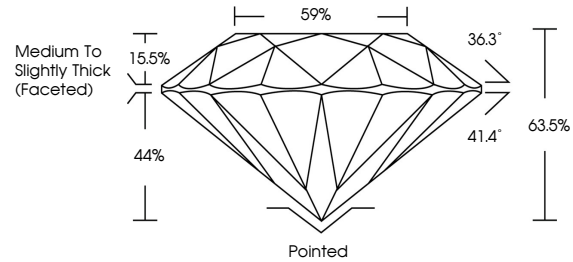
**INTERNATIONAL
GEMOLOGICAL
INSTITUTE**

ELECTRONIC COPY

LABORATORY GROWN DIAMOND REPORT

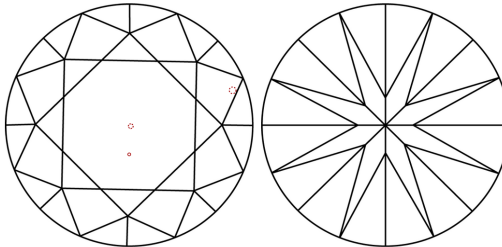
LG698552000
Report verification at igi.org

PROPORTIONS



Sample Image Used

CLARITY CHARACTERISTICS



KEY TO SYMBOLS

Red symbols indicate internal characteristics.
Green symbols indicate external characteristics.

COLOR

D E F G H I J Faint Very Light Light

CLARITY

IF WS¹⁻² VS¹⁻² SI¹⁻² I¹⁻³

Internally Flawless	Very Very Slightly Included	Very Slightly Included	Slightly Included	Included
------------------------	--------------------------------	---------------------------	----------------------	----------



© IGI 2020, International Gemological Institute

FD - 10 20

www.igi.org

THIS DOCUMENT WAS PRODUCED WITH THE FOLLOWING SECURITY MEASURES: SPECIAL DOCUMENT PAPER, INK SCREENS, WATERMARK BACKGROUND DESIGNS, HOLOGRAM AND OTHER SECURITY FEATURES NOT LISTED AND DO EXCEED DOCUMENT SECURITY INDUSTRY GUIDELINES.

LABORATORY GROWN DIAMOND REPORT



April 11, 2025

IGI Report Number **LG698552000**

Description	LABORATORY GROWN DIAMOND
-------------	--------------------------

Shape and Cutting Style **ROUND BRILLIANT**

Measurements 10.04 - 10.10 X 6.40 MM

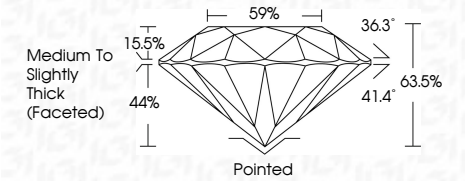
GRADING RESULTS

Carat Weight **4.06 CARATS**

Color Grade	F
-------------	---

Clarity Grade VS 1

Cut Grade **EXCELLENT**



ADDITIONAL GRADING INFORMATION

Polish **EXCELLENT**Symmetry **EXCELLENT**Fluorescence **NONE**Inscription(s) LG698552000

Comments: This Laboratory Grown Diamond was created by Chemical Vapor Deposition (CVD) growth process.
Type IIa



IGI

April 11, 2025	IGI Report No. IGL56955200		4.06 CARATS		Vs 1	Pointed	NONE	Igh1 IGL56955200	Comments: The Laboratory Grown Diamond was created by Chemical Vapor Deposition (CVD) growth process. Type IIa
ROUND BRILLIANT	10.04 - 10.10 X 6.40 MM	Color Grade	EXCELLENT	63.5%	Excellent	EXCELLENT			
		Carat Weight	63.5%	59%	Medium to Slightly Thick (Faceted)	EXCELLENT			
		Clarity Grade	EXCELLENT						
		Cut Grade	EXCELLENT						
		Depth				Culet			
		Table				Polish			
		Girdle				Symmetry			
						Fluorescence			
						Inscriptions(s)			