

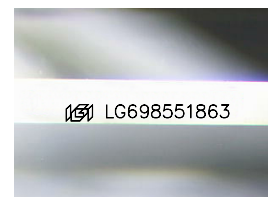
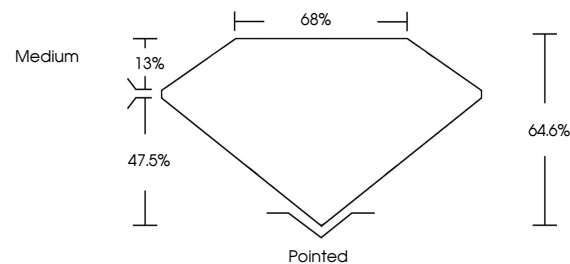


**ELECTRONIC COPY**

## LABORATORY GROWN DIAMOND REPORT

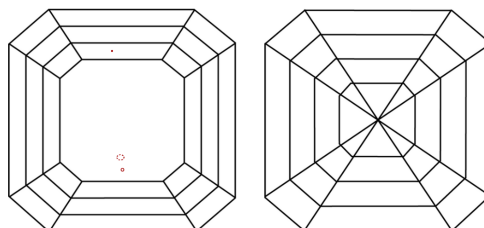
LG698551863  
Report verification at [igi.org](https://igi.org)

## PROPORTIONS



Sample Image Used

## CLARITY CHARACTERISTICS



## KEY TO SYMBOLS

Red symbols indicate internal characteristics.  
Green symbols indicate external characteristics.

## COLOR

D E F G H I J Faint Very Light Light

## CLARITY

IF                      VS<sup>1-2</sup>                      VS<sup>1-2</sup>                      S<sup>1-2</sup>                      |<sup>1-3</sup>

Internally Flawless	Very Very Slightly Included	Very Slightly Included	Slightly Included	Included
---------------------	-----------------------------	------------------------	-------------------	----------

## LABORATORY GROWN DIAMOND REPORT



April 12, 2025

IGI Report Number **LG698551863**

Description	LABORATORY GROWN DIAMOND
-------------	--------------------------

Shape and Cutting Style **SQUARE EMERALD CUT**

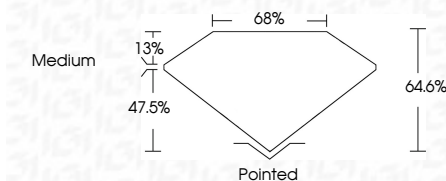
Measurements **5.76 X 5.67 X 3.66 MM**

## GRADING RESULTS

Carat Weight 1.10 CARAT

Color Grade	D
-------------	---

Clarity Grade VS 1



### ADDITIONAL GRADING INFORMATION

Polish **EXCELLENT**Symmetry **EXCELLENT**Fluorescence **NONE**Inscription(s)  LG698551863

Comments: This Laboratory Grown Diamond was created by Chemical Vapor Deposition (CVD) growth process.  
Type IIa



**www.igi.org**

© IGI 2020, International Gemological Institute

FD - 10 20



THIS DOCUMENT WAS PRODUCED WITH THE FOLLOWING SECURITY MEASURES: SPECIAL DOCUMENT PAPER, INK SCREENS, WATERMARK, BACKGROUND DESIGNS, HOLOGRAM AND OTHER SECURITY FEATURES NOT LISTED AND DO EXCEED DOCUMENT SECURITY INDUSTRY GUIDELINE

April 12, 2025  
IGI Report No LG698551863  
SQUARE EMERALD CUT

5.75 X 5.57 X 3.65 MM	Carat Weight	Color Grade	Clarity Grade	VS 1	1.10 CARAT
	Depth	Table	Girdle	64.6%	D
				66%	
				Medium	
	Quiet			Pointed	
	Polish			EXCELLENT	
	Symmetry			EXCELLENT	
	Fluorescence			NONE	
	Inscriptions (A)			None	
	Inscriptions (B)			None	

**Comments:**  
This Laboratory Grown Diamond was created by Chemical Vapor Deposition (CVD) growth process.