

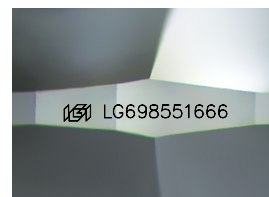
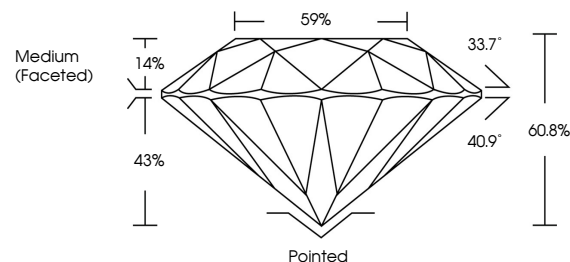


ELECTRONIC COPY

LABORATORY GROWN DIAMOND REPORT

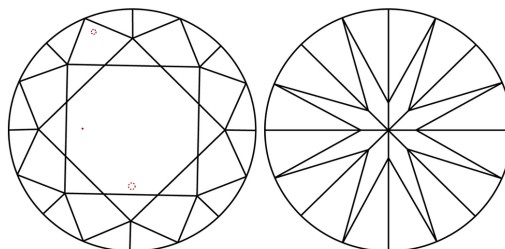
LG698551666
Report verification at lgi.org

PROPORTIONS



Sample Image Used

CLARITY CHARACTERISTICS



KEY TO SYMBOLS

Red symbols indicate internal characteristics.
Green symbols indicate external characteristics.

COLOR

D E F G H I J Faint Very Light Light

CLARITY

IF WS¹⁻² VS¹⁻² SI¹⁻² |¹⁻³

Internally Flawless	Very Very Slightly Included	Very Slightly Included	Slightly Included	Included
------------------------	--------------------------------	---------------------------	----------------------	----------

LABORATORY GROWN DIAMOND REPORT



April 11, 2025

IGI Report Number **LG698551666**Description **LABORATORY GROWN DIAMOND**Shape and Cutting Style **ROUND BRILLIANT**

Measurements 8.15 - 8.19 X 4.97 MM

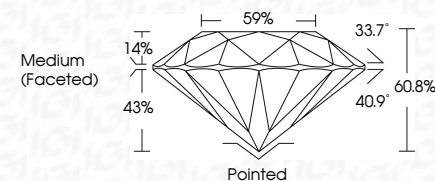
GRADING RESULTS

Carat Weight **2.04 CARATS**

Color Grade E

Clarity Grade VS 1

Cut Grade **IDEAL**



ADDITIONAL GRADING INFORMATION

Polish **EXCELLENT**Symmetry **EXCELLENT**Fluorescence **NONE**Inscription(s)  LG698551666

Comments: This Laboratory Grown Diamond was created by Chemical Vapor Deposition (CVD) growth process.

Type IIa



April 11, 2025	GI Report No. LG59851666	2.04 CARATS	VVS 1	Polished	Comments: This Laboratory Grown Diamond was created by Chemical Vapor Deposition (CVD) growth process. Type IIa
ROUND BRILLIANT			IDEAL	EXCELLENT	
5.19 x 5.19 x 4.97 MM	Color Weight		60.8%	EXCELLENT	
	Color Grade		6%	NONE	
	Clarity Grade		Medium (Faced)	gsl LG59851666	
	Table				
	Depth				
	Girdle				
	Culet				
	Polish				
	Symmetry				
	Fluorescence				
	Annotations(s)				

