

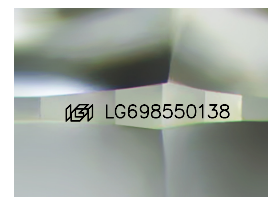
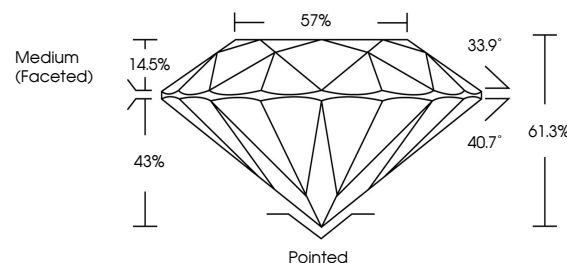


**ELECTRONIC COPY**

## LABORATORY GROWN DIAMOND REPORT

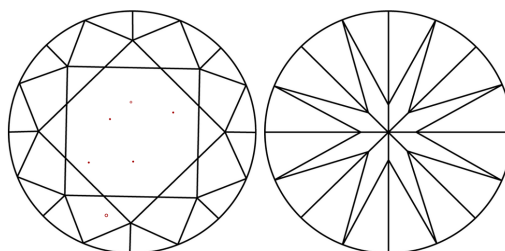
LG698550138  
Report verification at [igi.org](https://igi.org)

## PROPORTIONS



Sample Image Used

## CLARITY CHARACTERISTICS



### KEY TO SYMBOLS

Red symbols indicate internal characteristics.  
Green symbols indicate external characteristics.

## COLOR

D E F G H I J Faint Very Light Light

## CLARITY

IF WS<sup>1-2</sup> VS<sup>1-2</sup> SI<sup>1-2</sup> |<sup>1-3</sup>

Internally Flawless	Very Very Slightly Included	Very Slightly Included	Slightly Included	Included
------------------------	--------------------------------	---------------------------	----------------------	----------



April 21, 2025

IGI Report Number **LG698550138**Description **LABORATORY GROWN DIAMOND**Shape and Cutting Style **ROUND BRILLIANT**

Measurements 8.21 - 8.25 X 5.04 MM

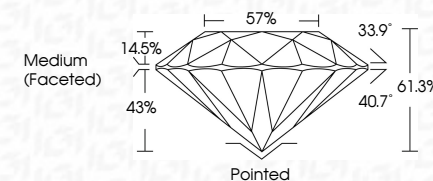
## GRADING RESULTS

Carat Weight **2.10 CARATS**

Color Grade	E
-------------	---

Clarity Grade VS 1

Cut Grade **IDEAL**



### ADDITIONAL GRADING INFORMATION

Polish **EXCELLENT**Symmetry **EXCELLENT**Fluorescence **NONE**Inscription(s)  LG698550138

Comments: This Laboratory Grown Diamond was created by Chemical Vapor Deposition (CVD) growth process.  
Type IIa



© IGI 2020, International Gemological Institute

FD - 10 20

**www.igi.org**



THIS DOCUMENT WAS PRODUCED WITH THE FOLLOWING SECURITY MEASURES: SPECIAL DOCUMENT PAPER, INK SCREENS, WATERMARK, BACKGROUND DESIGNS, HOLOGRAM AND OTHER SECURITY FEATURES NOT LISTED AND DO EXCEED DOCUMENT SECURITY INDUSTRY GUIDELINE

April 21, 2026	2.10 CARATS	Vs 1	61.5%	Medium (Faceted)	Painted	NONE	68(LG569520138)	Compassion: The Laboratory Growth Diamond was created by Chemical Vapor Deposition (CVD) growth process. type Ila
GJ Report No LG56950138	2.10 CARATS	Vs 1	61.5%		EXCELLENT			
ROUND BRILLIANT	2.121 - 8.25 X 5.04 MM	Color Grade	Depth	Table	Symmetry	Fluorescence		
		Color Grade	Cut Grade	Table	Fluorescence			