

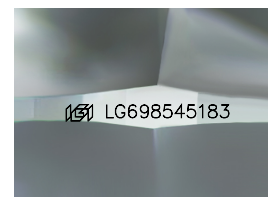
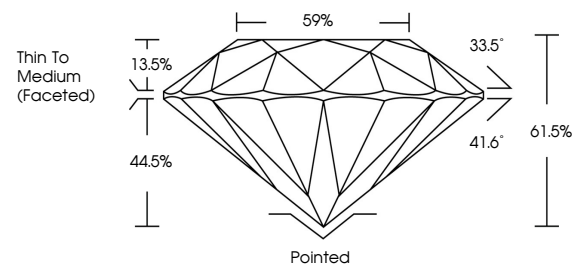


ELECTRONIC COPY

LABORATORY GROWN DIAMOND REPORT

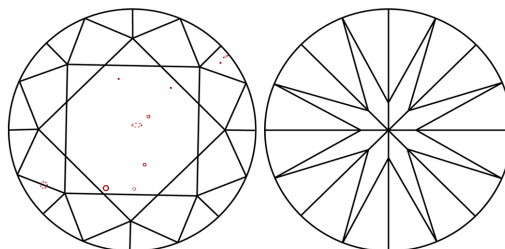
LG698545183
Report verification at igi.org

PROPORTIONS



Sample Image Used

CLARITY CHARACTERISTICS



KEY TO SYMBOLS

Red symbols indicate internal characteristics.
Green symbols indicate external characteristics.

COLOR

D E F G H I J Faint Very Light Light

CLARITY

IF WS¹⁻² VS¹⁻² SI¹⁻² |¹⁻³

Internally Flawless	Very Very Slightly Included	Very Slightly Included	Slightly Included	Included
------------------------	--------------------------------	---------------------------	----------------------	----------

LABORATORY GROWN DIAMOND REPORT



April 11, 2025

IGI Report Number **LG698545183**Description **LABORATORY GROWN DIAMOND**Shape and Cutting Style **ROUND BRILLIANT**

Measurements 8.21 - 8.26 X 5.07 MM

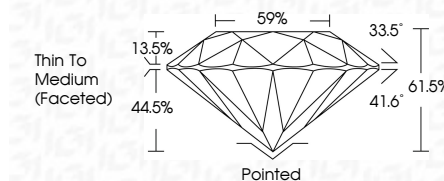
GRADING RESULTS

Carat Weight **2.08 CARATS**

Color Grade	D
-------------	---

Clarity Grade VS 2

Cut Grade **IDEAL**



ADDITIONAL GRADING INFORMATION

Polish **EXCELLENT**Symmetry **EXCELLENT**Fluorescence **NONE**Inscription(s) LG698545183

Comments: This Laboratory Grown Diamond was created by Chemical Vapor Deposition (CVD) growth process.

Type IIa



April 11, 2005	Color Weight	2.08 CARATS
Report No. LG598546183	Color Grade	D
ROUND BRILLIANT	Clarity Grade	VS2
	Cut Grade	IDEAL
	Depth	61.6%
	Table	59%
	Grain	Thin To Medium (peaked)
	Clue	Pointed
	Polish	EXCELLENT
	Symmetry	EXCELLENT
	Fluorescence	NONE
	Inscription(s)	lg598546183
Comments: This Laboratory Grown Diamond was created by Chemical Vapor Deposition (CVD) growth process. Type IIA		

