



**INTERNATIONAL
GEMOLOGICAL
INSTITUTE**

LABORATORY GROWN DIAMOND REPORT

May 1, 2025
 IGI Report Number **LG698536643**
 Description **LABORATORY GROWN DIAMOND**
 Shape and Cutting Style **ROUND BRILLIANT**
 Measurements **5.52 - 5.57 X 3.42 MM**

GRADING RESULTS

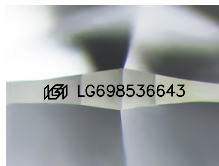
Carat Weight **0.66 CARAT**
 Color Grade **FANCY INTENSE PINK**
 Clarity Grade **VS 2**
 Cut Grade **EXCELLENT**

ADDITIONAL GRADING INFORMATION

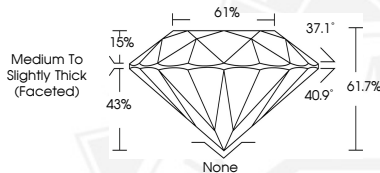
Polish **EXCELLENT**
 Symmetry **EXCELLENT**
 Fluorescence **SLIGHT**
 Inscription(s) **IGI LG698536643**

Comments: This Laboratory Grown Diamond was created by High Pressure High Temperature (HPHT) growth process. Indications of post-growth treatment.

ELECTRONIC COPY



Sample Image Used



May 1, 2025
 IGI Report Number **LG698536643**
 ROUND BRILLIANT
 LABORATORY GROWN DIAMOND
 5.52 - 5.57 X 3.42 MM
 Carat Weight **0.66 CARAT**
 Color Grade **FANCY INTENSE PINK**
 Clarity Grade **VS 2**
 Cut Grade **EXCELLENT**
 Polish **EXCELLENT**
 Symmetry **EXCELLENT**
 Fluorescence **SLIGHT**
 Inscription(s) **IGI LG698536643**

Comments: This Laboratory Grown Diamond was created by High Pressure High Temperature (HPHT) growth process. Indications of post-growth treatment.



May 1, 2025
 IGI Report Number **LG698536643**
 ROUND BRILLIANT
 LABORATORY GROWN DIAMOND
 5.52 - 5.57 X 3.42 MM
 Carat Weight **0.66 CARAT**
 Color Grade **FANCY INTENSE PINK**
 Clarity Grade **VS 2**
 Cut Grade **EXCELLENT**
 Polish **EXCELLENT**
 Symmetry **EXCELLENT**
 Fluorescence **SLIGHT**
 Inscription(s) **IGI LG698536643**

Comments: This Laboratory Grown Diamond was created by High Pressure High Temperature (HPHT) growth process. Indications of post-growth treatment.

THIS DOCUMENT WAS PRODUCED WITH THE FOLLOWING SECURITY MEASURES: SPECIAL DOCUMENT PAPER, INK SCREENS, WATERMARK, BACKGROUND DESIGN, HOLOGRAM AND OTHER SECURITY FEATURES NOT LISTED AND DO EXCEED DOCUMENT SECURITY INDUSTRY GUIDELINES.

For terms & conditions and to verify this report, please visit www.igi.org