



INTERNATIONAL GEMOLOGICAL INSTITUTE

LABORATORY GROWN DIAMOND REPORT

April 9, 2025
IGI Report Number **LG698529306**
Description **LABORATORY GROWN DIAMOND**
Shape and Cutting Style **ROUND BRILLIANT**
Measurements **6.34 - 6.41 X 3.86 MM**

GRADING RESULTS

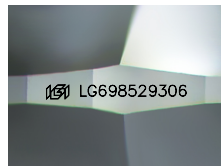
Carat Weight **0.97 CARAT**
Color Grade **E**
Clarity Grade **VS 1**
Cut Grade **IDEAL**

ADDITIONAL GRADING INFORMATION

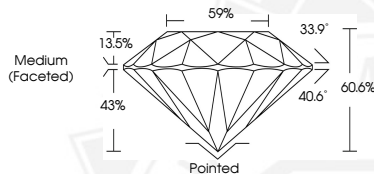
Polish **EXCELLENT**
Symmetry **EXCELLENT**
Fluorescence **NONE**
Inscription(s) **IGI LG698529306**

Comments: This Laboratory Grown Diamond was created by
Chemical Vapor Deposition (CVD) growth process.
Type IIa

ELECTRONIC COPY



Sample Image Used



April 9, 2025
IGI Report Number **LG698529306**
ROUND BRILLIANT
LABORATORY GROWN DIAMOND
6.34 - 6.41 X 3.86 MM
Carat Weight **0.97 CARAT**
Color Grade **E**
Clarity Grade **VS 1**
Cut Grade **IDEAL**
Polish **EXCELLENT**
Symmetry **EXCELLENT**
Fluorescence **NONE**
Inscription(s) **IGI LG698529306**
Comments: This Laboratory Grown
Diamond was created by
Chemical Vapor Deposition (CVD)
growth process. Type IIa



April 9, 2025
IGI Report Number **LG698529306**
ROUND BRILLIANT
LABORATORY GROWN DIAMOND
6.34 - 6.41 X 3.86 MM
Carat Weight **0.97 CARAT**
Color Grade **E**
Clarity Grade **VS 1**
Cut Grade **IDEAL**
Polish **EXCELLENT**
Symmetry **EXCELLENT**
Fluorescence **NONE**
Inscription(s) **IGI LG698529306**
Comments: This Laboratory Grown
Diamond was created by
Chemical Vapor Deposition (CVD)
growth process. Type IIa



THIS DOCUMENT WAS PRODUCED WITH THE FOLLOWING SECURITY MEASURES: SPECIAL DOCUMENT PAPER, INK SCREENS, WATERMARK, BACKGROUND DESIGN, HOLOGRAM AND OTHER SECURITY FEATURES NOT LISTED AND DO EXCEED DOCUMENT SECURITY INDUSTRY GUIDELINES.

For terms & conditions and to verify this report, please visit www.igi.org