

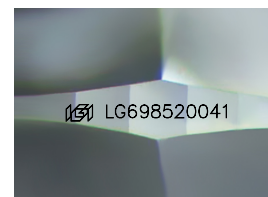
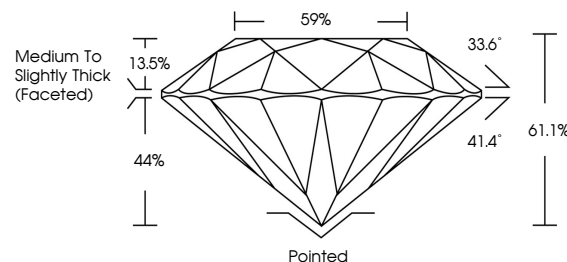


ELECTRONIC COPY

LABORATORY GROWN DIAMOND REPORT

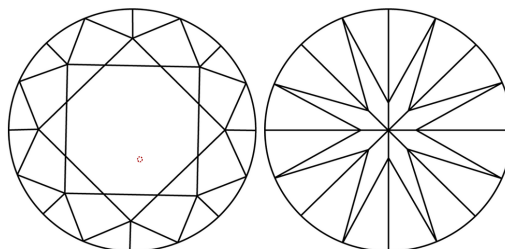
LG698520041
Report verification at lgi.org

PROPORTIONS



Sample Image Used

CLARITY CHARACTERISTICS



KEY TO SYMBOLS

Red symbols indicate internal characteristics.
Green symbols indicate external characteristics.

COLOR

D E F G H I J Faint Very Light Light

CLARITY

IF WS¹⁻² VS¹⁻² SI¹⁻² |¹⁻³

Internally Flawless	Very Very Slightly Included	Very Slightly Included	Slightly Included	Included
------------------------	--------------------------------	---------------------------	----------------------	----------

LABORATORY GROWN DIAMOND REPORT



April 14, 2025

IGI Report Number **LG698520041**Description **LABORATORY GROWN DIAMOND**Shape and Cutting Style **ROUND BRILLIANT**

Measurements 10.28 - 10.34 X 6.29 MM

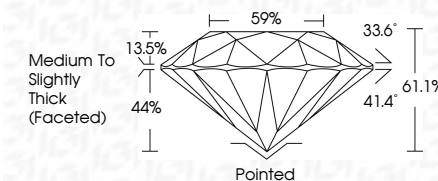
GRADING RESULTS

Carat Weight **4.10 CARATS**

Color Grade F

Clarity Grade **VVS 2**

Cut Grade **IDEAL**



ADDITIONAL GRADING INFORMATION

Polish EXCELLENT

Symmetry **EXCELLENT**Fluorescence **NONE**Inscription(s) LG698520041

Comments: This Laboratory Grown Diamond was created by Chemical Vapor Deposition (CVD) growth process.
Type IIa



© IGI 2020, International Gemological Institute

FD - 10 20

www.igi.org



THIS DOCUMENT WAS PRODUCED WITH THE FOLLOWING SECURITY MEASURES: SPECIAL DOCUMENT PAPER, INK SCREENS, WATERMARK, BACKGROUND DESIGNS, HOLOGRAM AND OTHER SECURITY FEATURES NOT LISTED AND DO EXCEED DOCUMENT SECURITY INDUSTRY GUIDELINE

April 14, 2026	Report No. LG9852041	4.10 CARATS	WS 2	Pointed	Comments: The laboratory Crown Diamond was used for all optical Deposition (CVD) growth process. Type Iia
ROUND BRILLIANT		F	IDEAL	EXCELLENT	
			61.1%	EXCELLENT	
			59%	NONE	
			Medium to Slightly Thick (Faceted)	lg9 LG9852041	
10.28 - 10.34 X 6.22 MM					
Card Weight	Color Grade	Clarity Grade	Cut Grade	Depth	
				Table	
				Girdle	
				Culet	
				Polish	
				Symmetry	
				Fluorescence	
				Inscriptions(s)	