



ELECTRONIC COPY

LG698519079
Report verification at igi.org



April 12, 2025

IGI Report Number **LG698519079**

Description **LABORATORY GROWN DIAMOND**

Shape and Cutting Style **PRINCESS CUT**

Measurements **5.58 X 5.57 X 4.14 MM**

GRADING RESULTS

Carat Weight **1.14 CARAT**

Color Grade **E**

Clarity Grade **VS 1**

April 12, 2025
IGI Report Number **LG698519079**
Description **LABORATORY GROWN DIAMOND**
Shape and Cutting Style **PRINCESS CUT**
Measurements **5.58 X 5.57 X 4.14 MM**

GRADING RESULTS

Carat Weight **1.14 CARAT**

Color Grade **E**

Clarity Grade **VS 1**

ADDITIONAL GRADING INFORMATION

Polish **VERY GOOD**

Symmetry **VERY GOOD**

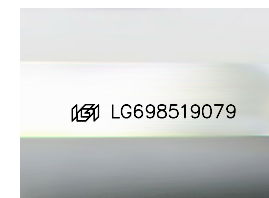
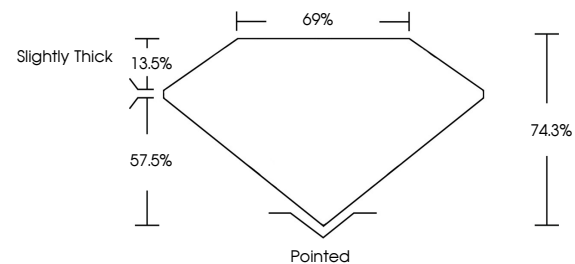
Fluorescence **NONE**

Inscription(s) **LG698519079**

Comments: As Grown - No indication of post-growth treatment.

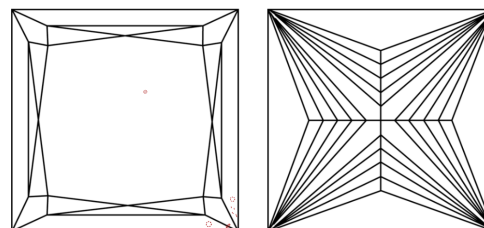
This Laboratory Grown Diamond was created by High Pressure High Temperature (HPHT) growth process. Type II

PROPORTIONS



Sample Image Used

CLARITY CHARACTERISTICS



KEY TO SYMBOLS

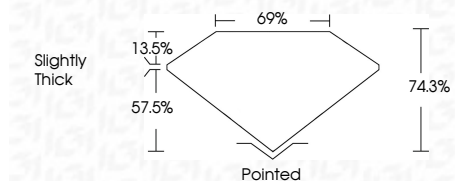
Red symbols indicate internal characteristics.
Green symbols indicate external characteristics.

COLOR

D E F G H I J Faint Very Light Light

CLARITY

IF	VS ¹⁻²	VS ¹⁻²	SI ¹⁻²	I ¹⁻³
Internally Flawless	Very Very Slightly Included	Very Slightly Included	Slightly Included	Included



ADDITIONAL GRADING INFORMATION

Polish **VERY GOOD**

Symmetry **VERY GOOD**

Fluorescence **NONE**

Inscription(s) **LG698519079**

Comments: As Grown - No indication of post-growth treatment.

This Laboratory Grown Diamond was created by High Pressure High Temperature (HPHT) growth process. Type II



IGI



April 12, 2025
IGI Report No. **LG698519079**
PRINCESS CUT
5.58 X 5.57 X 4.14 MM
1.14 CARAT
E
VS 1
74.3%
69%
Slightly Thick
Pointed
VERY GOOD
VERY GOOD
NONE
IGI LG698519079

Comments: As Grown - No indication of post-growth treatment.
This Laboratory Grown Diamond was created by High Pressure High Temperature (HPHT) growth process. Type II