

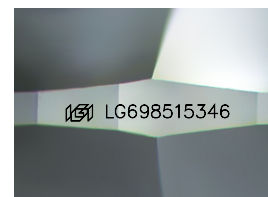
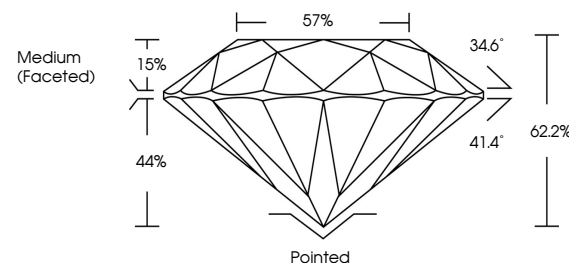


ELECTRONIC COPY

LABORATORY GROWN DIAMOND REPORT

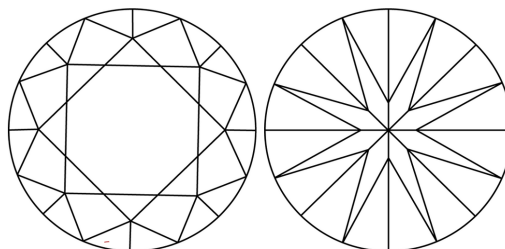
LG698515346
Report verification at igi.org

PROPORTIONS



Sample Image Used

CLARITY CHARACTERISTICS



KEY TO SYMBOLS

Red symbols indicate internal characteristics.
Green symbols indicate external characteristics.

COLOR

D E F G H I J Faint Very Light Light

CLARITY

IF WS¹⁻² VS¹⁻² SI¹⁻² |¹⁻³

Internally Flawless	Very Very Slightly Included	Very Slightly Included	Slightly Included	Included
------------------------	--------------------------------	---------------------------	----------------------	----------



© IGI 2020, International Gemological Institute

FD - 10 20

www.igi.org

LABORATORY GROWN DIAMOND REPORT



April 11, 2025

IGI Report Number **LG698515346**Description **LABORATORY GROWN DIAMOND**Shape and Cutting Style **ROUND BRILLIANT**

Measurements 6.78 - 6.81 X 4.23 MM

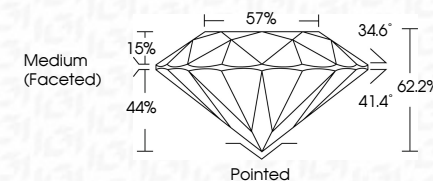
GRADING RESULTS

Carat Weight 1.19 CARAT

Color Grade D

Clarity Grade VS 1

Cut Grade **IDEAL**



ADDITIONAL GRADING INFORMATION

Polish EXCELLENT

Symmetry **EXCELLENT**Fluorescence **NONE**Inscription(s)  LG698515346

Comments: As Grown - No indication of post-growth treatment.

This Laboratory Grown Diamond was created by High Pressure High Temperature (HPHT) growth process.

Type II



April 11, 2026	1.19 CARAT
G1 Report No LG698518346	D
ROUND BRILLIANT	VS 1
	IDEAL
	62.2%
	57%
	Medium (Faceted)
	Pointed
	EXCELLENT
	EXCELLENT
	NONE
	lg616696518346
	Comments:
	Grown: No indication of post-growth
	This Laboratory Growth Diamond was
	created by High Pressure High
	temperature (HPHT) growth process.
	Type I