



**ELECTRONIC COPY**

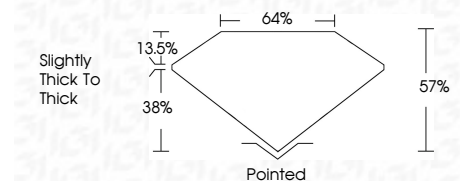
LG698513821  
Report verification at igi.org



April 17, 2025  
IGI Report Number **LG698513821**  
Description **LABORATORY GROWN DIAMOND**  
Shape and Cutting Style **HEXAGONAL STEP CUT**  
Measurements **8.16 X 6.95 X 3.96 MM**

**GRADING RESULTS**

Carat Weight **1.61 CARAT**  
Color Grade **D**  
Clarity Grade **VVS 2**

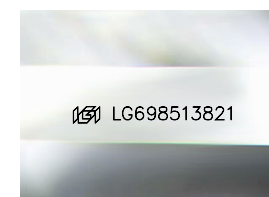


**ADDITIONAL GRADING INFORMATION**

Polish **EXCELLENT**  
Symmetry **EXCELLENT**  
Fluorescence **NONE**  
Inscription(s) **IGI LG698513821**  
Comments: As Grown - No indication of post-growth treatment.  
This Laboratory Grown Diamond was created by High Pressure High Temperature (HPHT) growth process.  
Type II

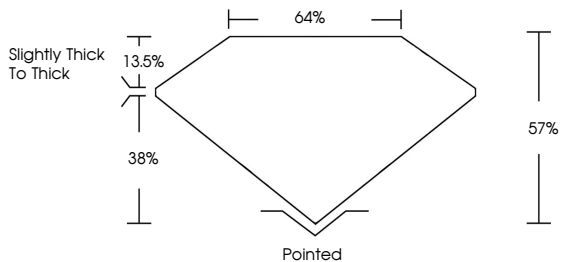


April 17, 2025  
IGI Report No LG698513821  
**HEXAGONAL STEP CUT**  
8.16 X 6.95 X 3.96 MM  
Carat Weight **1.61 CARAT**  
Color Grade **D**  
Clarity Grade **VVS 2**  
Depth **57%**  
Table **64%**  
Girdle **Slightly thick to thick**  
Culet **Pointed**  
Polish **EXCELLENT**  
Symmetry **EXCELLENT**  
Fluorescence **NONE**  
Inscription(s) **IGI LG698513821**  
Comments: As Grown - No indication of post-growth treatment.  
This Laboratory Grown Diamond was created by High Pressure High Temperature (HPHT) growth process.  
Type II

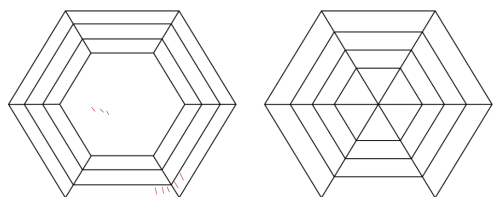


Sample Image Used

**PROPORTIONS**



**CLARITY CHARACTERISTICS**



**KEY TO SYMBOLS**

Red symbols indicate internal characteristics.  
Green symbols indicate external characteristics.

**COLOR**

D	E	F	G	H	I	J	Faint	Very Light	Light
---	---	---	---	---	---	---	-------	------------	-------

**CLARITY**

IF	VS <sup>1-2</sup>	VS <sup>1-2</sup>	SI <sup>1-2</sup>	I <sup>1-3</sup>
Internally Flawless	Very Very Slightly Included	Very Slightly Included	Slightly Included	Included

