



ELECTRONIC COPY

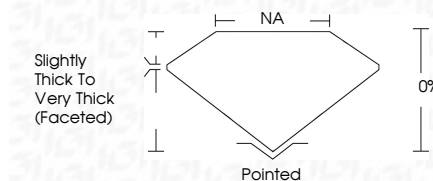
LG698513306
Report verification at igi.org



April 17, 2025
IGI Report Number **LG698513306**
Description **LABORATORY GROWN DIAMOND**
Shape and Cutting Style **HALF MOON MIXED CUT**
Measurements **18.51 X 9.31 X 3.20 MM**

GRADING RESULTS

Carat Weight **4.85 CARATS**
Color Grade **F**
Clarity Grade **VS 1**
Cut Grade **VERY GOOD**

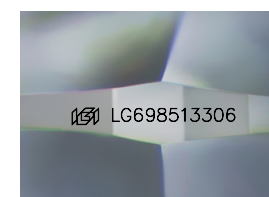


ADDITIONAL GRADING INFORMATION

Polish **EXCELLENT**
Symmetry **EXCELLENT**
Fluorescence **NONE**
Inscription(s) **IGI LG698513306**
Comments: This Laboratory Grown Diamond was created by Chemical Vapor Deposition (CVD) growth process. Type IIa

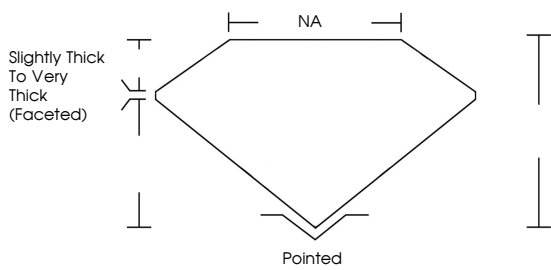


April 17, 2025
IGI Report No LG698513306
HALF MOON MIXED CUT
18.51 X 9.31 X 3.20 MM
Carat Weight **4.85 CARATS**
Color Grade **F**
Clarity Grade **VS 1**
Cut Grade **VERY GOOD**
Depth **0%**
Table **NA**
Girdle **Slightly Thick to Very Thick (Faceted)**
Culet **Pointed**
Polish **EXCELLENT**
Symmetry **EXCELLENT**
Fluorescence **NONE**
Inscription(s) **IGI LG698513306**
Comments: This Laboratory Grown Diamond was created by Chemical Vapor Deposition (CVD) growth process. Type IIa



Sample Image Used

PROPORTIONS



COLOR

D E F G H I J Faint Very Light Light

CLARITY

IF VS¹⁻² VS¹⁻² SI¹⁻² I¹⁻³
Internally Flawless Very Very Slightly Included Very Slightly Included Slightly Included Included



April 17, 2025
IGI Report Number **LG698513306**
Description **LABORATORY GROWN DIAMOND**
Shape and Cutting Style **HALF MOON MIXED CUT**
Measurements **18.51 X 9.31 X 3.20 MM**
GRADING RESULTS
Carat Weight **4.85 CARATS**
Color Grade **F**
Clarity Grade **VS 1**
Cut Grade **VERY GOOD**
ADDITIONAL GRADING INFORMATION
Polish **EXCELLENT**
Symmetry **EXCELLENT**
Fluorescence **NONE**
Inscription(s) **IGI LG698513306**
Comments: This Laboratory Grown Diamond was created by Chemical Vapor Deposition (CVD) growth process. Type IIa