



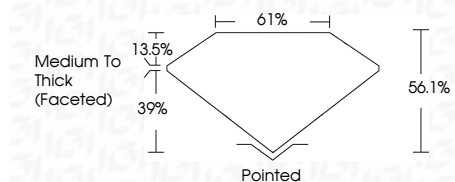
ELECTRONIC COPY

LG698508575
Report verification at igi.org



July 14, 2025
IGI Report Number **LG698508575**
Description **LABORATORY GROWN DIAMOND**
Shape and Cutting Style **HEART BRILLIANT**
Measurements **8.83 X 10.09 X 5.66 MM**

GRADING RESULTS
Carat Weight **3.00 CARATS**
Color Grade **G**
Clarity Grade **SI 1**



ADDITIONAL GRADING INFORMATION
Polish **EXCELLENT**
Symmetry **VERY GOOD**
Fluorescence **NONE**
Inscription(s) **(IGI) LG698508575**
Comments: This Laboratory Grown Diamond was created by Chemical Vapor Deposition (CVD) growth process. Type IIa

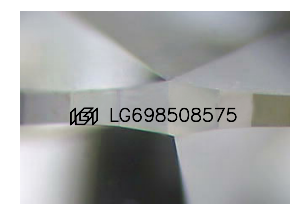
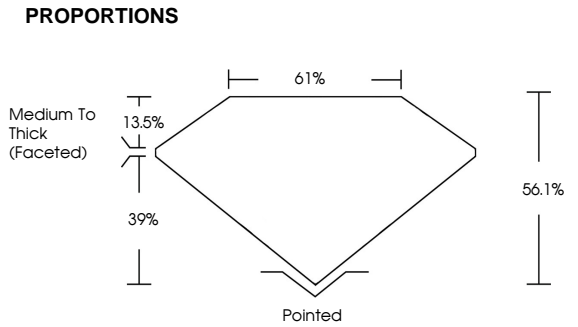


July 14, 2025
IGI Report No **LG698508575**
HEART BRILLIANT
8.83 X 10.09 X 5.66 MM
3.00 CARATS
SI 1
G
56.1%
61%
Medium To Thick (Faceted)
Pointed
EXCELLENT
VERY GOOD
NONE
(IGI) LG698508575
Comments: This Laboratory Grown Diamond was created by Chemical Vapor Deposition (CVD) growth process. Type IIa

July 14, 2025
IGI Report Number **LG698508575**
Description **LABORATORY GROWN DIAMOND**
Shape and Cutting Style **HEART BRILLIANT**
Measurements **8.83 X 10.09 X 5.66 MM**
GRADING RESULTS
Carat Weight **3.00 CARATS**
Color Grade **G**
Clarity Grade **SI 1**

ADDITIONAL GRADING INFORMATION
Polish **EXCELLENT**
Symmetry **VERY GOOD**
Fluorescence **NONE**
Inscription(s) **(IGI) LG698508575**

Comments: This Laboratory Grown Diamond was created by Chemical Vapor Deposition (CVD) growth process. Type IIa



Sample Image Used

COLOR

D	E	F	G	H	I	J	Faint	Very Light	Light
---	---	---	---	---	---	---	-------	------------	-------

CLARITY

IF	VS ¹⁻²	VS ¹⁻²	SI ¹⁻²	I ¹⁻³
Internally Flawless	Very Very Slightly Included	Very Slightly Included	Slightly Included	Included

