



ELECTRONIC COPY

LG698502341
Report verification at igi.org



April 25, 2025

IGI Report Number **LG698502341**

Description **LABORATORY GROWN DIAMOND**

Shape and Cutting Style **ROUND BRILLIANT**

Measurements **8.32 - 8.40 X 5.15 MM**

GRADING RESULTS

Carat Weight **2.22 CARATS**

Color Grade **FANCY VIVID BROWNISH ORANGE**

Clarity Grade **VS 2**

Cut Grade **IDEAL**

April 25, 2025
IGI Report Number **LG698502341**
Description **LABORATORY GROWN DIAMOND**
Shape and Cutting Style **ROUND BRILLIANT**
Measurements **8.32 - 8.40 X 5.15 MM**

GRADING RESULTS

Carat Weight **2.22 CARATS**

Color Grade **FANCY VIVID BROWNISH ORANGE**

Clarity Grade **VS 2**

Cut Grade **IDEAL**

ADDITIONAL GRADING INFORMATION

Polish **EXCELLENT**

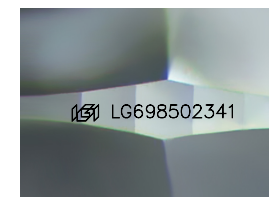
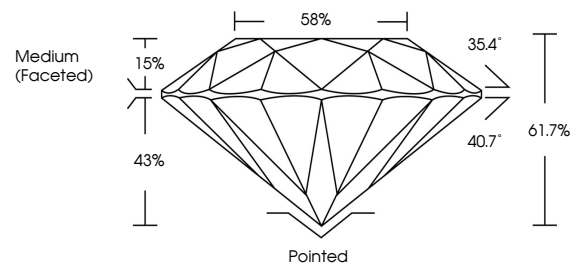
Symmetry **EXCELLENT**

Fluorescence **NONE**

Inscription(s) **IGI LG698502341**

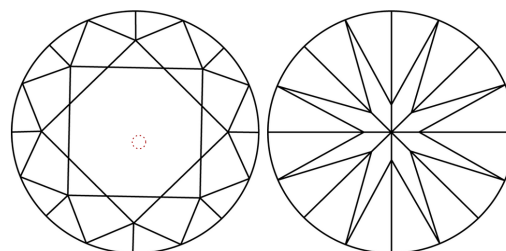
Comments: This Laboratory Grown Diamond was created by Chemical Vapor Deposition (CVD) growth process.
Indications of post-growth treatment.

PROPORTIONS



Sample Image Used

CLARITY CHARACTERISTICS



KEY TO SYMBOLS

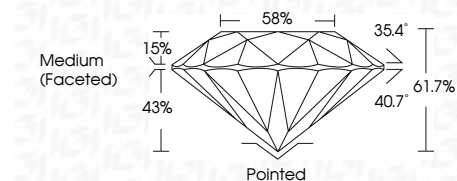
Red symbols indicate internal characteristics.
Green symbols indicate external characteristics.

COLOR

D E F G H I J Faint Very Light Light

CLARITY

IF	VS ¹⁻²	VS ¹⁻²	SI ¹⁻²	I ¹⁻³
Internally Flawless	Very Very Slightly Included	Very Slightly Included	Slightly Included	Included



ADDITIONAL GRADING INFORMATION

Polish **EXCELLENT**

Symmetry **EXCELLENT**

Fluorescence **NONE**

Inscription(s) **IGI LG698502341**

Comments: This Laboratory Grown Diamond was created by Chemical Vapor Deposition (CVD) growth process.
Indications of post-growth treatment.



April 25, 2025
IGI Report No LG698502341
ROUND BRILLIANT
2.22 CARATS
Carat Weight
Color Grade **FANCY VIVID BROWNISH ORANGE**
Clarity Grade **VS 2**
Cut Grade **IDEAL**
Depth 61.7%
Table 58%
Girdle **Medium (Faceted)**
Culet **Pointed**
Polish **EXCELLENT**
Symmetry **EXCELLENT**
Fluorescence **NONE**
Inscription(s) **IGI LG698502341**
Comments: This Laboratory Grown Diamond was created by Chemical Vapor Deposition (CVD) growth process.
Indications of post-growth treatment.