



ELECTRONIC COPY

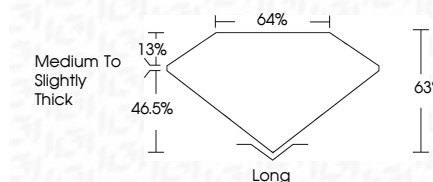
LG698501349 Report verification at igi.org



April 8, 2025 IGI Report Number LG698501349 Description LABORATORY GROWN DIAMOND Shape and Cutting Style EMERALD CUT Measurements 13.84 X 8.90 X 5.61 MM

GRADING RESULTS

Carat Weight 7.36 CARATS Color Grade E Clarity Grade VS 1



ADDITIONAL GRADING INFORMATION

Polish EXCELLENT Symmetry EXCELLENT Fluorescence NONE Inscription(s) LG698501349 Comments: This Laboratory Grown Diamond was created by Chemical Vapor Deposition (CVD) growth process. Type IIa



April 8, 2025 IGI Report No. LG698501349 EMERALD CUT 13.84 X 8.90 X 5.61 MM 7.36 CARATS E VS 1 63% 46.5% Medium to Slightly Thick Long EXCELLENT EXCELLENT NONE LG698501349

Comments: This Laboratory Grown Diamond was created by Chemical Vapor Deposition (CVD) growth process. Type IIa

April 8, 2025 IGI Report Number LG698501349 Description LABORATORY GROWN DIAMOND Shape and Cutting Style EMERALD CUT Measurements 13.84 X 8.90 X 5.61 MM

GRADING RESULTS

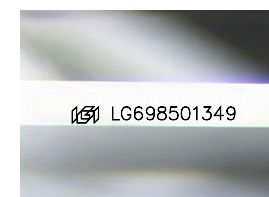
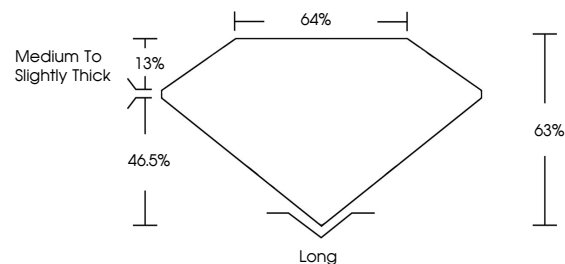
Carat Weight 7.36 CARATS Color Grade E Clarity Grade VS 1

ADDITIONAL GRADING INFORMATION

Polish EXCELLENT Symmetry EXCELLENT Fluorescence NONE Inscription(s) LG698501349

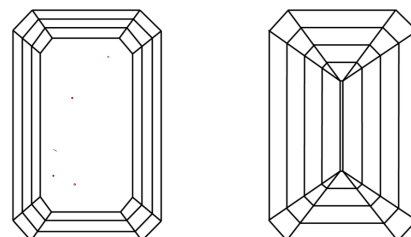
Comments: This Laboratory Grown Diamond was created by Chemical Vapor Deposition (CVD) growth process. Type IIa

PROPORTIONS



Sample Image Used

CLARITY CHARACTERISTICS



KEY TO SYMBOLS

Red symbols indicate internal characteristics. Green symbols indicate external characteristics.

COLOR

D E F G H I J Faint Very Light Light

CLARITY

IF WS 1-2 VS 1-2 SI 1-2 I 1-3 Internally Flawless Very Very Slightly Included Very Slightly Included Slightly Included Included

