



ELECTRONIC COPY

LABORATORY GROWN DIAMOND REPORT

| | |
|-------------------------|--|
| April 11, 2025 | |
| IGI Report Number | LG697520405 |
| Description | LABORATORY GROWN DIAMOND |
| Shape and Cutting Style | CUT CORNERED RECTANGULAR MODIFIED BRILLIANT |
| Measurements | 13.16 X 9.14 X 6.10 MM |

GRADING RESULTS

| | |
|---------------|-------------|
| Carat Weight | 6.13 CARATS |
| Color Grade | F |
| Clarity Grade | VS 2 |

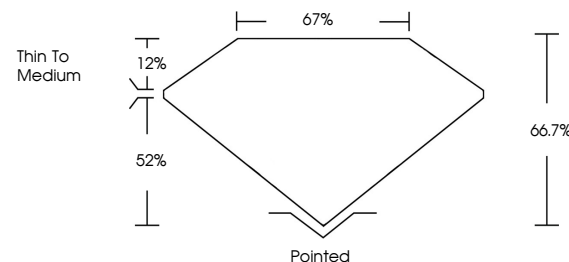
ADDITIONAL GRADING INFORMATION

| | |
|----------------|----------------|
| Polish | EXCELLENT |
| Symmetry | EXCELLENT |
| Fluorescence | NONE |
| Inscription(s) | 15 LG697520405 |

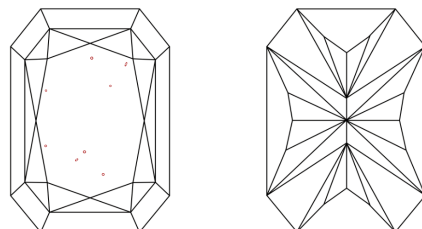
Comments: This Laboratory Grown Diamond was created by Chemical Vapor Deposition (CVD) growth process.
Type IIa

LG697520405
Report verification at lgi.org

PROPORTIONS

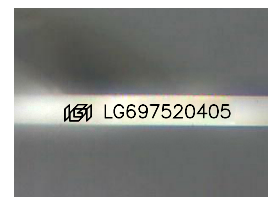


CLARITY CHARACTERISTICS



KEY TO SYMBOLS

Red symbols indicate internal characteristics.
Green symbols indicate external characteristics.



Sample Image Used

COLOR

D E F G H I J Faint Very Light Light

CLARITY

IF VWS¹⁻² VS¹⁻² SI¹⁻² I¹⁻³

| Internally Flawless | Very Very Slightly Included | Very Slightly Included | Slightly Included | Included |
|------------------------|--------------------------------|---------------------------|----------------------|----------|
|------------------------|--------------------------------|---------------------------|----------------------|----------|

LABORATORY GROWN DIAMOND REPORT

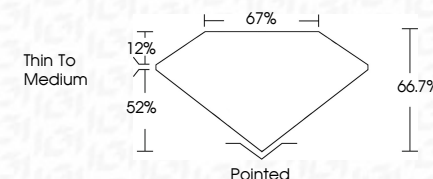


| | |
|-------------------------|---|
| April 11, 2025 | |
| IGI Report Number | LG697520405 |
| Description | LABORATORY GROWN DIAMOND |
| Shape and Cutting Style | CUT CORNERED RECTANGULAR MODIFIED BRILLIANT |

Measurements **13.16 X 9.14 X 6.10 MM**

GRADING RESULTS

| | |
|---------------|-------------|
| Carat Weight | 6.13 CARATS |
| Color Grade | F |
| Clarity Grade | VS 2 |



ADDITIONAL GRADING INFORMATION

| | |
|---|---|
| Polish | EXCELLENT |
| Symmetry | EXCELLENT |
| Fluorescence | NONE |
| Inscription(s) |  LG697520405 |
| <p>Comments: This Laboratory Grown Diamond was created by Chemical Vapor Deposition (CVD) growth process.</p> <p>Type IIa</p> | |



© IGI 2020, International Gemological Institute

FD - 10 20

www.igi.org

THIS DOCUMENT WAS PRODUCED WITH THE FOLLOWING SECURITY MEASURES: SPECIAL DOCUMENT PAPER, INK SCREENS, WATERMARK BACKGROUND DESIGNS, HOLOGRAM AND OTHER SECURITY FEATURES NOT LISTED AND DO EXCEED DOCUMENT SECURITY INDUSTRY GUIDELINES

| | | | |
|---------------------------------------|-------------------------|----------------|---|
| April 11, 2025 | GI Report No LG69752005 | 6.13 CARATS | F |
| CUT CORNERED RECT, MODIFIED BRILLIANT | | | |
| MM | | | |
| Color | Clarity | VS 2 | |
| Weight | Depth | 66.7% | |
| Grade | Table | 67% | |
| | Girdle | Thin To Medium | |
| Culet | Polished | | |
| Polish | Excellent | | |
| Symmetry | Excellent | | |
| Fluorescence | None | | |
| Comments | Sent to Gemstone | | |

Comments:
This Laboratory Grown Diamond was
created by Chemical Vapor Deposition
(CVD) growth process.