



**ELECTRONIC COPY**

LG697514041  
Report verification at igi.org



April 14, 2025

IGI Report Number **LG697514041**

Description **LABORATORY GROWN DIAMOND**

Shape and Cutting Style **ROUND CORNERED  
RECTANGULAR MODIFIED  
BRILLIANT**

Measurements **7.91 X 4.92 X 3.12 MM**

**GRADING RESULTS**

Carat Weight **1.10 CARAT**

Color Grade **F**

Clarity Grade **VS 1**

**LABORATORY GROWN DIAMOND REPORT**

April 14, 2025

IGI Report Number **LG697514041**

Description **LABORATORY GROWN DIAMOND**

Shape and Cutting Style **ROUND CORNERED  
RECTANGULAR MODIFIED  
BRILLIANT**

Measurements **7.91 X 4.92 X 3.12 MM**

**GRADING RESULTS**

Carat Weight **1.10 CARAT**

Color Grade **F**

Clarity Grade **VS 1**

**ADDITIONAL GRADING INFORMATION**

Polish **EXCELLENT**

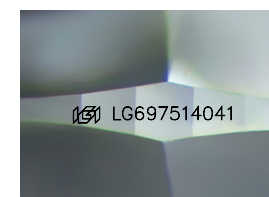
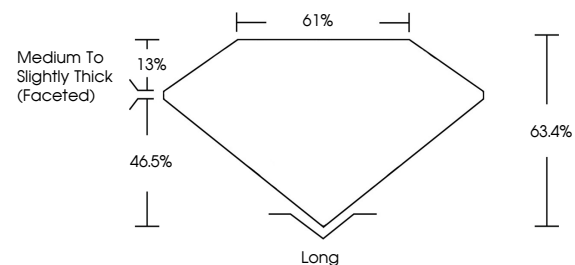
Symmetry **EXCELLENT**

Fluorescence **NONE**

Inscription(s) **IGI LG697514041**

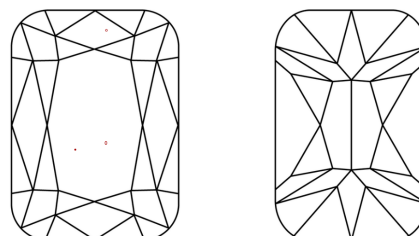
Comments: This Laboratory Grown Diamond was created by Chemical Vapor Deposition (CVD) growth process. Type IIa

**PROPORTIONS**



Sample Image Used

**CLARITY CHARACTERISTICS**



**KEY TO SYMBOLS**

Red symbols indicate internal characteristics.  
Green symbols indicate external characteristics.

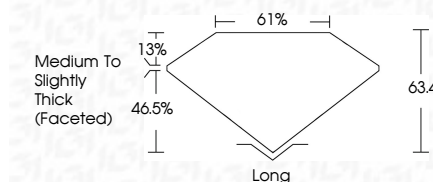
**COLOR**

D E F G H I J Faint Very Light Light

**CLARITY**

IF WS<sup>1-2</sup> VS<sup>1-2</sup> SI<sup>1-2</sup> I<sup>1-3</sup>

Internally Flawless Very Very Slightly Included Very Slightly Included Slightly Included Included



**ADDITIONAL GRADING INFORMATION**

Polish **EXCELLENT**

Symmetry **EXCELLENT**

Fluorescence **NONE**

Inscription(s) **IGI LG697514041**

Comments: This Laboratory Grown Diamond was created by Chemical Vapor Deposition (CVD) growth process. Type IIa



April 14, 2025  
IGI Report No LG697514041  
**ROUND CORNERED RECT. MODIFIED  
BRILLIANT**  
7.91 X 4.92 X 3.12 MM

Carat Weight **1.10 CARAT**  
Color Grade **F**  
Clarity Grade **VS 1**  
Depth **63.4%**  
Table **61%**  
Girdle **Medium to Slightly Thick (Faceted)**

Culet **Long**  
Polish **EXCELLENT**  
Symmetry **EXCELLENT**  
Fluorescence **NONE**  
Inscription(s) **IGI LG697514041**

Comments: This Laboratory Grown Diamond was created by Chemical Vapor Deposition (CVD) growth process. Type IIa