



ELECTRONIC COPY

LG697511224
Report verification at igi.org



April 15, 2025

IGI Report Number **LG697511224**

Description **LABORATORY GROWN DIAMOND**

Shape and Cutting Style **CUT CORNERED
RECTANGULAR MODIFIED
BRILLIANT**

Measurements **7.47 X 5.34 X 3.35 MM**

GRADING RESULTS

Carat Weight **1.20 CARAT**

Color Grade **D**

Clarity Grade **VVS 2**

LABORATORY GROWN DIAMOND REPORT

April 15, 2025

IGI Report Number **LG697511224**

Description **LABORATORY GROWN DIAMOND**

Shape and Cutting Style **CUT CORNERED RECTANGULAR
MODIFIED BRILLIANT**

Measurements **7.47 X 5.34 X 3.35 MM**

GRADING RESULTS

Carat Weight **1.20 CARAT**

Color Grade **D**

Clarity Grade **VVS 2**

ADDITIONAL GRADING INFORMATION

Polish **EXCELLENT**

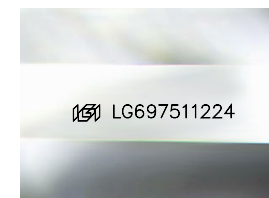
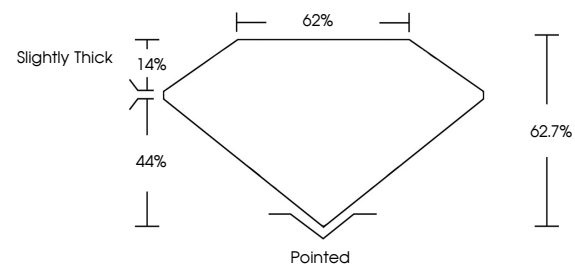
Symmetry **EXCELLENT**

Fluorescence **NONE**

Inscription(s) **IGI LG697511224**

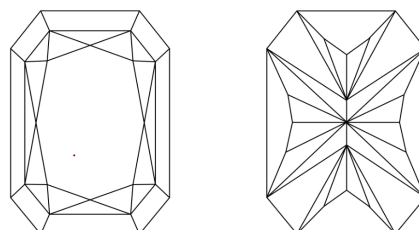
Comments: This Laboratory Grown Diamond was created by Chemical Vapor Deposition (CVD) growth process.
Type IIa

PROPORTIONS



Sample Image Used

CLARITY CHARACTERISTICS



KEY TO SYMBOLS

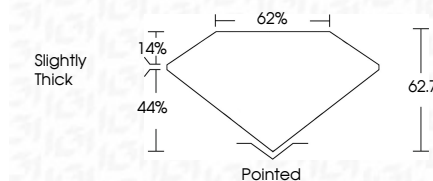
Red symbols indicate internal characteristics.
Green symbols indicate external characteristics.

COLOR

D E F G H I J Faint Very Light Light

CLARITY

IF	VS ¹⁻²	VS ¹⁻²	SI ¹⁻²	I ¹⁻³
Internally Flawless	Very Very Slightly Included	Very Slightly Included	Slightly Included	Included



ADDITIONAL GRADING INFORMATION

Polish **EXCELLENT**

Symmetry **EXCELLENT**

Fluorescence **NONE**

Inscription(s) **IGI LG697511224**

Comments: This Laboratory Grown Diamond was created by Chemical Vapor Deposition (CVD) growth process.
Type IIa



IGI



April 15, 2025
IGI Report No LG697511224
CUT CORNERED RECT. MODIFIED BRILLIANT
1.20 CARAT
D
7.47 X 5.34 X 3.35 MM
Color Grade
VVS 2
Depth 62.7%
Table 62%
Girdle
Slightly Thick
Pointed
Polish EXCELLENT
Symmetry EXCELLENT
Fluorescence NONE
Inscription(s) IGI LG697511224
Comments: This Laboratory Grown Diamond was created by Chemical Vapor Deposition (CVD) growth process.
Type IIa