



**ELECTRONIC COPY**

LG696596101  
Report verification at igi.org



April 29, 2025

IGI Report Number **LG696596101**

Description **LABORATORY GROWN DIAMOND**

Shape and Cutting Style **CUT CORNERED  
RECTANGULAR MODIFIED  
BRILLIANT**

Measurements **9.55 X 6.93 X 4.81 MM**

**GRADING RESULTS**

Carat Weight **3.02 CARATS**

Color Grade **FANCY INTENSE YELLOW**

Clarity Grade **VS 1**

April 29, 2025  
IGI Report Number **LG696596101**  
Description **LABORATORY GROWN DIAMOND**  
Shape and Cutting Style **CUT CORNERED RECTANGULAR  
MODIFIED BRILLIANT**  
Measurements **9.55 X 6.93 X 4.81 MM**

**GRADING RESULTS**

Carat Weight **3.02 CARATS**

Color Grade **FANCY INTENSE YELLOW**

Clarity Grade **VS 1**

**ADDITIONAL GRADING INFORMATION**

Polish **EXCELLENT**

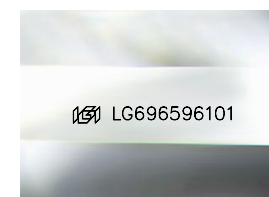
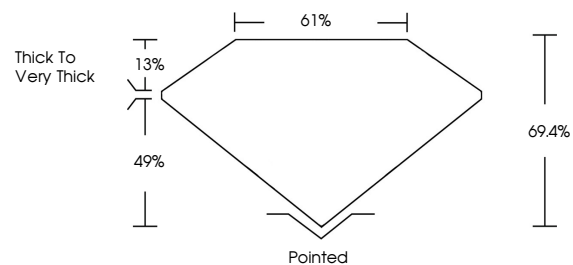
Symmetry **EXCELLENT**

Fluorescence **NONE**

Inscription(s) **IGI LG696596101**

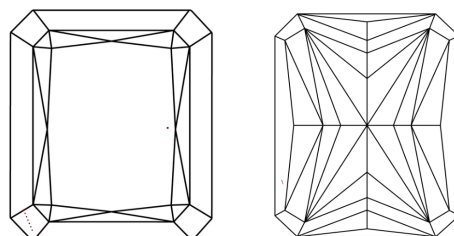
Comments: This Laboratory Grown Diamond was created by Chemical Vapor Deposition (CVD) growth process.

**PROPORTIONS**



Sample Image Used

**CLARITY CHARACTERISTICS**



**KEY TO SYMBOLS**

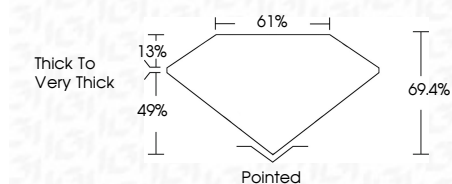
Red symbols indicate internal characteristics.  
Green symbols indicate external characteristics.

**COLOR**

D E F G H I J Faint Very Light Light

**CLARITY**

IF	VS <sup>1-2</sup>	VS <sup>1-2</sup>	SI <sup>1-2</sup>	I <sup>1-3</sup>
Internally Flawless	Very Very Slightly Included	Very Slightly Included	Slightly Included	Included



**ADDITIONAL GRADING INFORMATION**

Polish **EXCELLENT**

Symmetry **EXCELLENT**

Fluorescence **NONE**

Inscription(s) **IGI LG696596101**

Comments: This Laboratory Grown Diamond was created by Chemical Vapor Deposition (CVD) growth process.



**IGI**



April 29, 2025  
IGI Report No. LG696596101  
CUT CORNERED RECT. MODIFIED BRILLIANT  
3.02 CARATS  
Carat Weight  
Color Grade FANCY INTENSE YELLOW  
Clarity Grade VS 1  
Depth 69.4%  
Table 61%  
Girdle Thick to Very Thick  
Culet Pointed  
Polish EXCELLENT  
Symmetry EXCELLENT  
Fluorescence NONE  
Inscription(s) IGI LG696596101  
Comments: This Laboratory Grown Diamond was created by Chemical Vapor Deposition (CVD) growth process.