



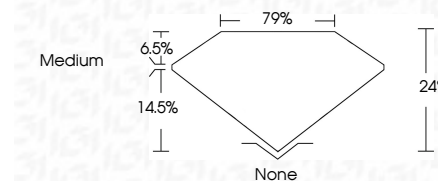
ELECTRONIC COPY

LG696581007
Report verification at igi.org



May 16, 2025
IGI Report Number **LG696581007**
Description **LABORATORY GROWN DIAMOND**
Shape and Cutting Style **OCTAGONAL MIXED CUT**
Measurements **16.09 X 16.15 X 3.88 MM**

GRADING RESULTS
Carat Weight **11.30 CARATS**
Color Grade **FANCY PINK**
Clarity Grade **VVS 2**



ADDITIONAL GRADING INFORMATION
Polish **EXCELLENT**
Symmetry **EXCELLENT**
Fluorescence **SLIGHT**
Inscription(s) **IGI LG696581007**
Comments: This Laboratory Grown Diamond was created by Chemical Vapor Deposition (CVD) growth process. Indications of post-growth treatment.



May 16, 2025
IGI Report No LG696581007
OCTAGONAL MIXED CUT
16.09 X 16.15 X 3.88 MM
11.30 CARATS
FANCY PINK
VVS 2
24%
79%
Medium
None
EXCELLENT
EXCELLENT
SLIGHT
IGI LG696581007
Comments: This Laboratory Grown Diamond was created by Chemical Vapor Deposition (CVD) growth process. Indications of post-growth treatment.

LABORATORY GROWN DIAMOND REPORT

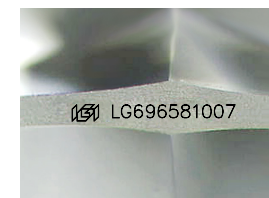
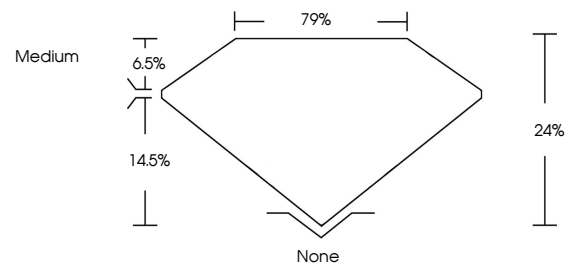
May 16, 2025
IGI Report Number **LG696581007**
Description **LABORATORY GROWN DIAMOND**
Shape and Cutting Style **OCTAGONAL MIXED CUT**
Measurements **16.09 X 16.15 X 3.88 MM**

GRADING RESULTS
Carat Weight **11.30 CARATS**
Color Grade **FANCY PINK**
Clarity Grade **VVS 2**

ADDITIONAL GRADING INFORMATION
Polish **EXCELLENT**
Symmetry **EXCELLENT**
Fluorescence **SLIGHT**
Inscription(s) **IGI LG696581007**

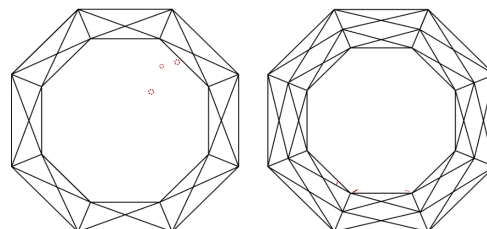
Comments: This Laboratory Grown Diamond was created by Chemical Vapor Deposition (CVD) growth process. Indications of post-growth treatment.

PROPORTIONS



Sample Image Used

CLARITY CHARACTERISTICS



KEY TO SYMBOLS

Red symbols indicate internal characteristics.
Green symbols indicate external characteristics.

COLOR

D E F G H I J Faint Very Light Light

CLARITY

IF	VS ¹⁻²	VS ¹⁻²	SI ¹⁻²	I ¹⁻³
Internally Flawless	Very Very Slightly Included	Very Slightly Included	Slightly Included	Included

