



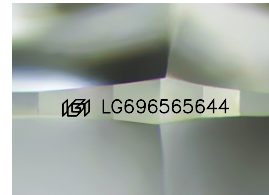
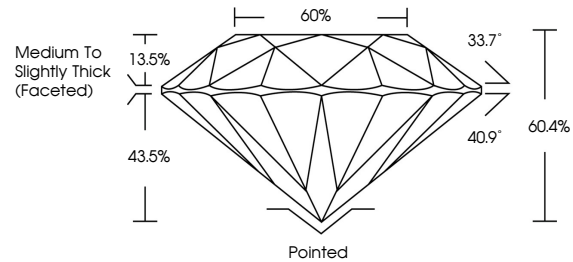
**INTERNATIONAL  
GEMOLOGICAL  
INSTITUTE**

**ELECTRONIC COPY**

## LABORATORY GROWN DIAMOND REPORT

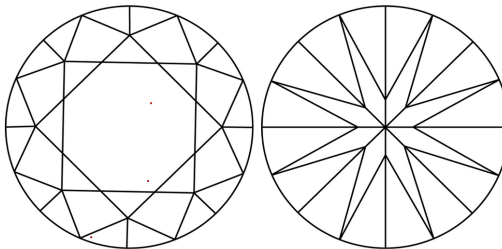
LG696565644  
Report verification at [igi.org](https://igi.org)

## PROPORTIONS



Sample Image Used

## CLARITY CHARACTERISTICS



## KEY TO SYMBOLS

Red symbols indicate internal characteristics.  
Green symbols indicate external characteristics.

## COLOR

D E F G H I J Faint Very Light Light

## CLARITY

IF      WS<sup>1-2</sup>      VS<sup>1-2</sup>      SI<sup>1-2</sup>      I<sup>1-3</sup>

|                        |                                |                           |                      |          |
|------------------------|--------------------------------|---------------------------|----------------------|----------|
| Internally<br>Flawless | Very Very<br>Slightly Included | Very<br>Slightly Included | Slightly<br>Included | Included |
|------------------------|--------------------------------|---------------------------|----------------------|----------|



© IGI 2020, International Gemological Institute

FD - 10 20

**www.igi.org**

## LABORATORY GROWN DIAMOND REPORT



April 8, 2025

IGI Report Number **LG696565644**

|             |                          |
|-------------|--------------------------|
| Description | LABORATORY GROWN DIAMOND |
|-------------|--------------------------|

Shape and Cutting Style **ROUND BRILLIANT**

Measurements 10.27 - 10.33 X 6.22 MM

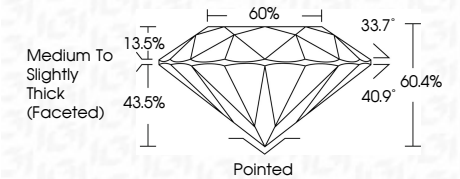
## GRADING RESULTS

Carat Weight **4.08 CARATS**

|             |   |
|-------------|---|
| Color Grade | F |
|-------------|---|

Clarity Grade **VVS 2**

Cut Grade **IDEAL**



### ADDITIONAL GRADING INFORMATION

Polish **EXCELLENT**Symmetry **EXCELLENT**Fluorescence **NONE**Inscription(s)  LG696565644

Comments: This Laboratory Grown Diamond was created by Chemical Vapor Deposition (CVD) growth process.  
Type IIa



IGI

|                        |                                  |                     |                      |                  |              |              |   |                |                  |                     |                      |  |
|------------------------|----------------------------------|---------------------|----------------------|------------------|--------------|--------------|---|----------------|------------------|---------------------|----------------------|--|
| <b>April 8, 2025</b>   | <b>IGI Report No. US96956644</b> | <b>4.08 CARATS</b>  | <b>VVS 2</b>         | <b>IDeAL</b>     | <b>60-65</b> | <b>60%</b>   | <b>Medium to Slightly Thick (faceted)</b> | <b>Poished</b> | <b>EXCELLENT</b> | <b>EXCELLENT</b>    | <b>NONE</b>          | <b>#691G96956644</b>   |
| <b>ROUND BRILLIANT</b> | <b>10.27 - 10.33 X 6.22 MM</b>   | <b>Color Weight</b> | <b>Clarity Grade</b> | <b>Cut Grade</b> | <b>Depth</b> | <b>Table</b> | <b>Girdle</b>                             | <b>Culet</b>   | <b>Symmetry</b>  | <b>Fluorescence</b> | <b>Inclusions(1)</b> | <b>Comments:</b><br>The Laboratory Grown Diamond was created by Chemical Vapor Deposition (CVD) growth process.<br><b>Type IId</b> |