

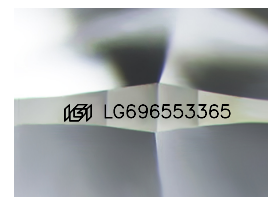
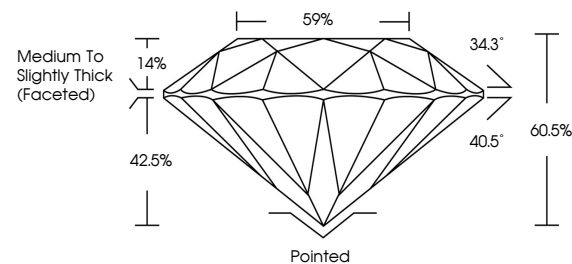


**ELECTRONIC COPY**

## LABORATORY GROWN DIAMOND REPORT

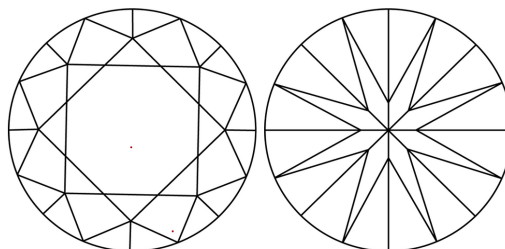
LG696553365  
Report verification at [igi.org](https://igi.org)

## PROPORTIONS



Sample Image Used

## CLARITY CHARACTERISTICS



## KEY TO SYMBOLS

Red symbols indicate internal characteristics.  
Green symbols indicate external characteristics.

## COLOR

D E F G H I J Faint Very Light Light

## CLARITY

IF WS<sup>1-2</sup> VS<sup>1-2</sup> SI<sup>1-2</sup> |<sup>1-3</sup>

| Internally<br>Flawless | Very Very<br>Slightly Included | Very<br>Slightly Included | Slightly<br>Included | Included |
|------------------------|--------------------------------|---------------------------|----------------------|----------|
|------------------------|--------------------------------|---------------------------|----------------------|----------|



April 17, 2025

IGI Report Number **LG696553365**

Description **LABORATORY GROWN DIAMOND**Shape and Cutting Style **ROUND BRILLIANT**

Measurements **9.44 - 9.52 X 5.75 MM**

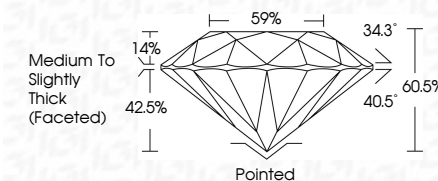
## GRADING RESULTS

Carat Weight **3.21 CARATS**

| Color Grade | F |
|-------------|---|
|-------------|---|

Clarity Grade **VVS 2**

Cut Grade **IDEAL**



### ADDITIONAL GRADING INFORMATION

Polish EXCELLENT

Symmetry **EXCELLENT**Fluorescence NONIInscription(s)  LG696553365

Comments: This Laboratory Grown Diamond was created by Chemical Vapor Deposition (CVD) growth process.

Type IIa



© IGI 2020, International Gemological Institute

FD - 10 20

**www.igi.org**



THIS DOCUMENT WAS PRODUCED WITH THE FOLLOWING SECURITY MEASURES: SPECIAL DOCUMENT PAPER, INK SCREENS, WATERMARK, BACKGROUND DESIGNS, HOLOGRAM AND OTHER SECURITY FEATURES NOT LISTED AND DO EXCEED DOCUMENT SECURITY INDUSTRY GUIDELINES

April 17, 2025  
ICI Report No LG696553365  
ROUND BRILLIANT

|                              |  |   |                         |
|------------------------------|--|---|-------------------------|
| <b>9.44 - 9.52 X 5.75 MM</b> |  | <b>3.21 CARATS</b>                        |                         |
| Carat Weight                 |  |   | <b>F</b>                |
| Color Grade                  |  |   |                         |
| Clarity Grade                |  | <b>VVS 2</b>                              |                         |
| Cut Grade                    |  | <b>IDEAL</b>                              |                         |
| Depth                        |  | <b>60.05%</b>                             |                         |
| Table                        |  | <b>59%</b>                                |                         |
| Girdle                       |  | <b>Medium To Slightly Thick (Faceted)</b> |                         |
| Culet                        |  |   | <b>Pointed</b>          |
| Polish                       |  |   | <b>EXCELLENT</b>        |
| Symmetry                     |  |   | <b>EXCELLENT</b>        |
| Fluorescence                 |  |   | <b>NONE</b>             |
| Identification               |  |   | <b>gem 124683939545</b> |

**Comments:**  
This Laboratory Grown Diamond was created by Chemical Vapor Deposition (CVD) growth process.