

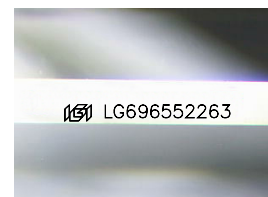
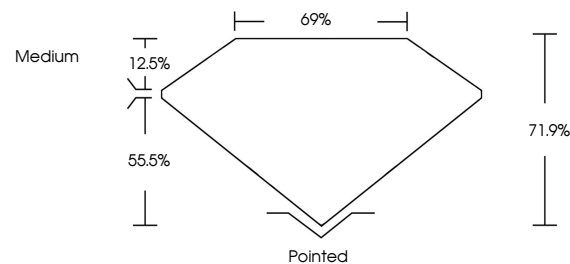


ELECTRONIC COPY

LABORATORY GROWN DIAMOND REPORT

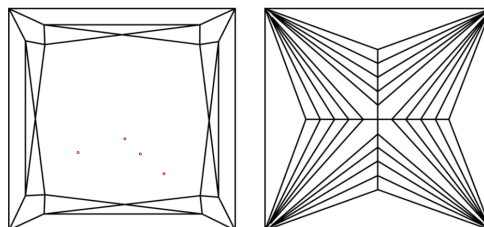
LG696552263
Report verification at igi.org

PROPORTIONS



Sample Image Used

CLARITY CHARACTERISTICS



KEY TO SYMBOLS

Red symbols indicate internal characteristics.
Green symbols indicate external characteristics.

COLOR

D E F G H I J Faint Very Light Light

CLARITY

IF	VS ¹⁻²	VS ¹⁻²	SI ¹⁻²	I ¹⁻³
Internally Flawless	Very Very Slightly Included	Very Slightly Included	Slightly Included	Included

LABORATORY GROWN DIAMOND REPORT



April 7, 2025

IGI Report Number **LG696552263**

Description	LABORATORY GROWN DIAMOND
-------------	--------------------------

Shape and Cutting Style **PRINCESS CUT**

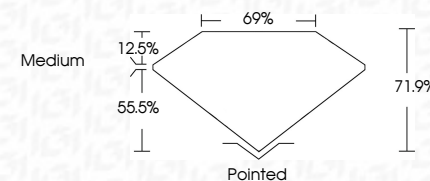
Measurements **10.41 X 10.34 X 7.43 MM**

GRADING RESULTS

Carat Weight **7.13 CARATS**

Color Grade	E
-------------	---

Clarity Grade VS 1



ADDITIONAL GRADING INFORMATION

Polish **EXCELLENT**Symmetry **EXCELLENT**Fluorescence **NONE**Inscription(s) LG696552263

Comments: This Laboratory Grown Diamond was created by Chemical Vapor Deposition (CVD) growth process.
Type IIa



www.igi.org

© IGI 2020, International Gemological Institute

FD - 10 20



THIS DOCUMENT WAS PRODUCED WITH THE FOLLOWING SECURITY MEASURES: SPECIAL DOCUMENT PAPER, INK SCREENS, WATERMARK, BACKGROUND DESIGNS, HOLOGRAM AND OTHER SECURITY FEATURES NOT LISTED AND DO EXCEED DOCUMENT SECURITY INDUSTRY GUIDELINES

April 7, 2025
GI Report No LG696552263
PRINCESS CUT

10.41 X 10.34 X 7.43 MM	7.13 CARATS	
Carat Weight	VS 1	Polished
Color Grade	71.9%	EXCELLENT
Clarity Grade	69%	EXCELLENT
Depth	Medium	NONE
Table		
Grade		
Culet		
Polish		
Symmetry		
Fluorescence		
Comments		

Comments:
This Laboratory Grown Diamond was created by Chemical Vapor Deposition (CVD) growth process.