

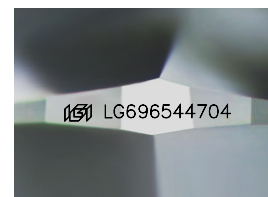
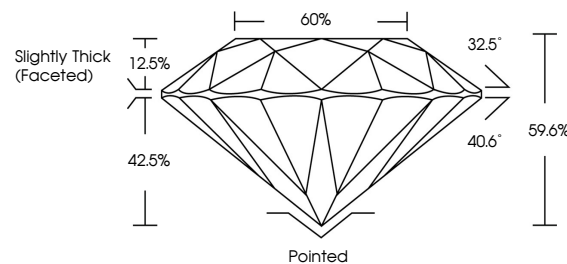


ELECTRONIC COPY

LABORATORY GROWN DIAMOND REPORT

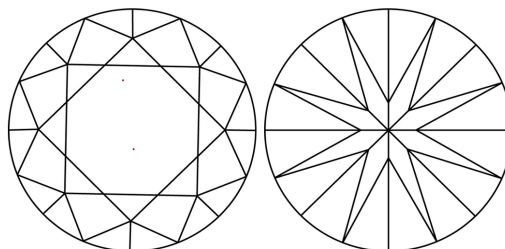
LG696544704
Report verification at igi.org

PROPORTIONS



Sample Image Used

CLARITY CHARACTERISTICS



KEY TO SYMBOLS

Red symbols indicate internal characteristics.
Green symbols indicate external characteristics.

COLOR

D E F G H I J Faint Very Light Light

CLARITY

IF WS¹⁻² VS¹⁻² SI¹⁻² |¹⁻³

Internally Flawless	Very Very Slightly Included	Very Slightly Included	Slightly Included	Included
------------------------	--------------------------------	---------------------------	----------------------	----------

LABORATORY GROWN DIAMOND REPORT



April 30, 2025

IGI Report Number **LG696544704**

Description	LABORATORY GROWN DIAMOND
-------------	--------------------------

Shape and Cutting Style **ROUND BRILLIANT**

Measurements	11.76 - 11.84 X 7.02 MM
--------------	-------------------------

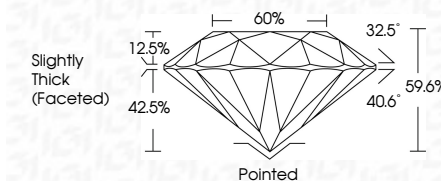
GRADING RESULTS

Carat Weight 6.04 CARATS

Color Grade E

Clarity Grade **VVS 2**

Cut Grade **EXCELLENT**



ADDITIONAL GRADING INFORMATION

Polish **EXCELLENT**Symmetry **EXCELLENT**Fluorescence **NONE**Inscription(s) LG696544704

Comments: This Laboratory Grown Diamond was created by Chemical Vapor Deposition (CVD) growth process.
Type IIa



© IGI 2020, International Gemological Institute

FD - 10 20



THIS DOCUMENT WAS PRODUCED WITH THE FOLLOWING SECURITY MEASURES: SPECIAL DOCUMENT PAPER, INK SCREENS, WATERMARK, BACKGROUND DESIGNS, HOLOGRAM, AND OTHER SECURITY FEATURES NOT LISTED AND DO EXCEED DOCUMENT SECURITY INDUSTRY GUIDELINES.

www.igi.org

April 30, 2025	Report No. LG9664704	6.04 CARATS	VS 2	59.6%	60%	Pointed	NONE	lg9 LG9664704	Comments: The laboratory Grown Diamond was found to be a synthetic diamond (GVD) grown from growth type IIA
ROUND BRILLIANT	11.76 x 11.84 x 7.02 MM	Color Grade	Clarity Grade	Depth	Table	Slightly Thick (Faceted)	Fluorescence	lg9 LG9664704	
		Carat Weight	Color Grade	Clarity Grade	Depth	Table	Fluorescence		