



ELECTRONIC COPY

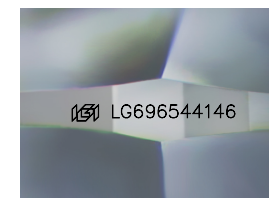
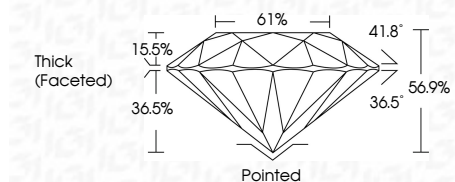
LG696544146
Report verification at igi.org



May 1, 2025
IGI Report Number LG696544146
Description LABORATORY GROWN DIAMOND
Shape and Cutting Style ROUND MIXED CUT
Measurements 11.31 - 11.34 X 6.45 MM

GRADING RESULTS

Carat Weight 6.05 CARATS
Color Grade F
Clarity Grade VVS 2



Sample Image Used

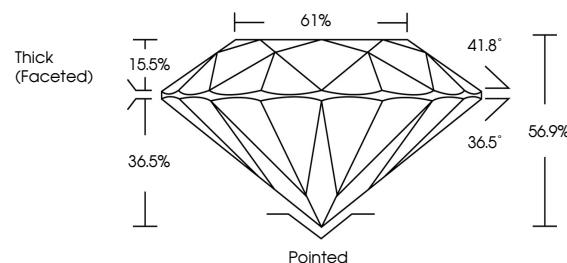
ADDITIONAL GRADING INFORMATION

Polish EXCELLENT
Symmetry VERY GOOD
Fluorescence NONE
Inscription(s) IGI LG696544146
Comments: This Laboratory Grown Diamond was created by Chemical Vapor Deposition (CVD) growth process. Type IIa

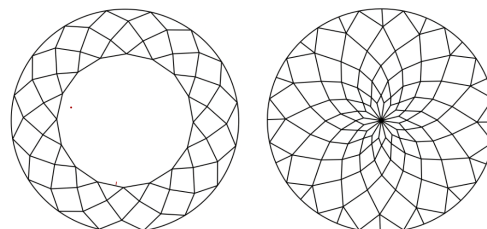


May 1, 2025
IGI Report No LG696544146
ROUND MIXED CUT
6.05 CARATS F
11.31 - 11.34 X 6.45 MM
Carat Weight 6.05 CARATS
Color Grade F
Clarity Grade VVS 2
Depth 56.9%
Table 61%
Girdle Thick (Faceted)
Culet Pointed
Polish EXCELLENT
Symmetry VERY GOOD
Fluorescence NONE
Inscription(s) IGI LG696544146
Comments: This Laboratory Grown Diamond was created by Chemical Vapor Deposition (CVD) growth process. Type IIa

PROPORTIONS



CLARITY CHARACTERISTICS



KEY TO SYMBOLS

Red symbols indicate internal characteristics.
Green symbols indicate external characteristics.

COLOR

D E F G H I J Faint Very Light Light

CLARITY

IF WS 1-2 VS 1-2 SI 1-2 I 1-3
Internally Flawless Very Very Slightly Included Very Slightly Included Slightly Included Included

