



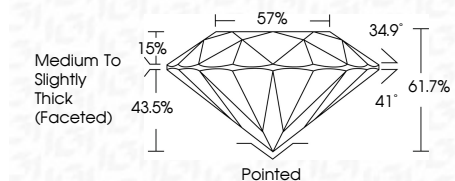
ELECTRONIC COPY

LG696536016 Report verification at igi.org



April 9, 2025 IGI Report Number LG696536016 Description LABORATORY GROWN DIAMOND Shape and Cutting Style ROUND BRILLIANT Measurements 10.17 - 10.23 X 6.29 MM

GRADING RESULTS Carat Weight 4.01 CARATS Color Grade E Clarity Grade VS 2 Cut Grade IDEAL



ADDITIONAL GRADING INFORMATION Polish EXCELLENT Symmetry EXCELLENT Fluorescence NONE Inscription(s) LG696536016 Comments: HEARTS & ARROWS This Laboratory Grown Diamond was created by Chemical Vapor Deposition (CVD) growth process. Type IIa



April 9, 2025 IGI Report No LG696536016 ROUND BRILLIANT 10.17 - 10.23 X 6.29 MM 4.01 CARATS E VS 2 IDEAL 61.7% 57% Medium To Slightly Thick (Faceted) Pointed EXCELLENT EXCELLENT NONE NONE LG696536016

Comments: Hearts & Arrows This Laboratory Grown Diamond was created by Chemical Vapor Deposition (CVD) growth process. Type IIa

LABORATORY GROWN DIAMOND REPORT

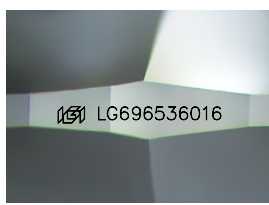
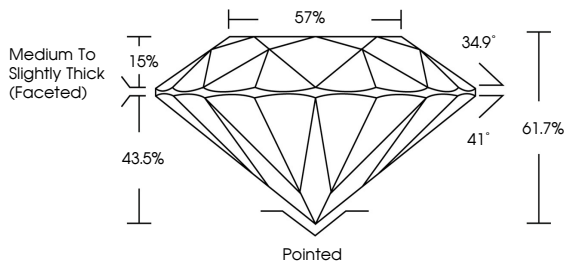
April 9, 2025 IGI Report Number LG696536016 Description LABORATORY GROWN DIAMOND Shape and Cutting Style ROUND BRILLIANT Measurements 10.17 - 10.23 X 6.29 MM

GRADING RESULTS Carat Weight 4.01 CARATS Color Grade E Clarity Grade VS 2 Cut Grade IDEAL

ADDITIONAL GRADING INFORMATION Polish EXCELLENT Symmetry EXCELLENT Fluorescence NONE Inscription(s) LG696536016

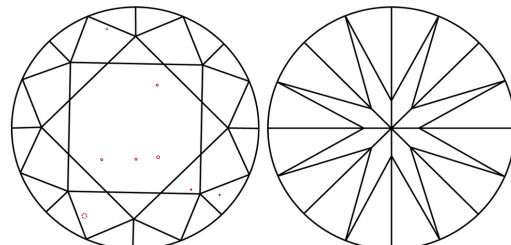
Comments: HEARTS & ARROWS This Laboratory Grown Diamond was created by Chemical Vapor Deposition (CVD) growth process. Type IIa

PROPORTIONS

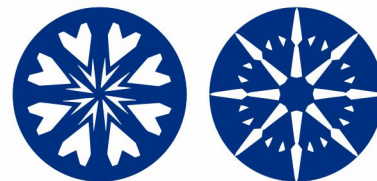


Sample Image Used

CLARITY CHARACTERISTICS



KEY TO SYMBOLS Red symbols indicate internal characteristics. Green symbols indicate external characteristics.



COLOR

Table with columns D, E, F, G, H, I, J and corresponding color descriptions: Faint, Very Light, Light

CLARITY

Table with columns IF, VS 1-2, VS 1-2, SI 1-2, I 1-3 and corresponding clarity descriptions: Internally Flawless, Very Very Slightly Included, Very Slightly Included, Slightly Included, Included

