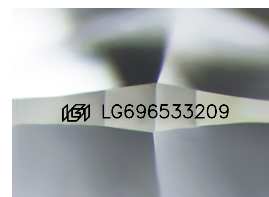
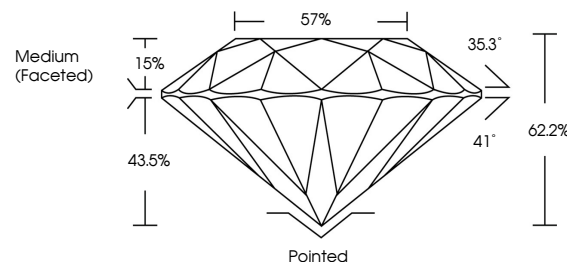


ELECTRONIC COPY

LABORATORY GROWN DIAMOND REPORT

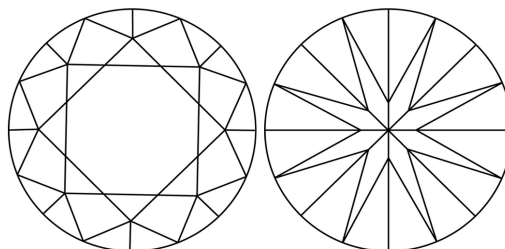
LG696533209
Report verification at lqi.org

PROPORTIONS



Sample Image Used

CLARITY CHARACTERISTICS



KEY TO SYMBOLS

Red symbols indicate internal characteristics.
Green symbols indicate external characteristics.

COLOR

D E F G H I J Faint Very Light Light

CLARITY

IF WS¹⁻² VS¹⁻² SI¹⁻² |¹⁻³

Internally Flawless	Very Very Slightly Included	Very Slightly Included	Slightly Included	Included
------------------------	--------------------------------	---------------------------	----------------------	----------



© IGI 2020, International Gemological Institute

FD - 10 20

www.igi.org

LABORATORY GROWN DIAMOND REPORT



April 30, 2025

IGI Report Number **LG696533209**Description **LABORATORY GROWN DIAMOND**Shape and Cutting Style **ROUND BRILLIANT**

Measurements 6.38 - 6.43 X 3.98 MM

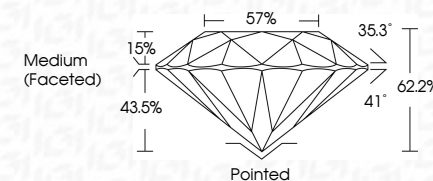
GRADING RESULTS

Carat Weight 1.01 CARAT

Color Grade

Clarity Grade **INTERNALLY FLAWLESS**

Cut Grade **IDEAL**



ADDITIONAL GRADING INFORMATION

Polish **EXCELLENT**Symmetry **EXCELLENT**Fluorescence **NONE**Inscription(s) LG696533209

Comments: As Grown - No indication of post-growth treatment.

This Laboratory Grown Diamond was created by High Pressure High Temperature (HPHT) growth process.

Type II



April 30, 2026	G Report No LG969433029	SOUND BRILLIANT	1.01 CARAT D	IF IDEAL 68.2% 57%	Poited EXCELLENT EXCELLENT NONE	#G LSG65653209	Comments:
							To Be Grown - No indication of post-growth treatment.
							This Laboratory Grown Diamond was created by High Pressure High temperature (HPHT) growth process.
				Medium (Faceted)			Type I