

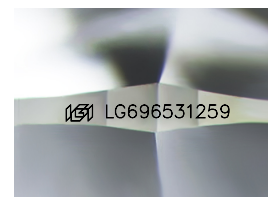
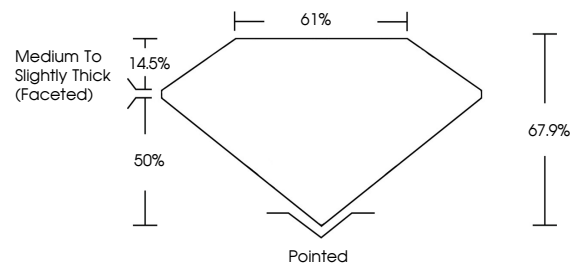


**ELECTRONIC COPY**

## LABORATORY GROWN DIAMOND REPORT

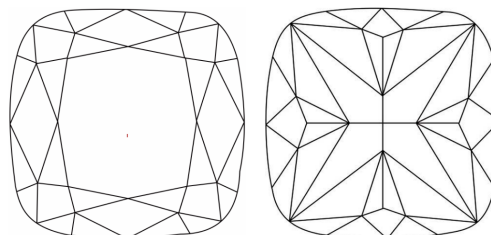
LG696531259  
Report verification at [igi.org](https://igi.org)

## PROPORTIONS



Sample Image Used

## CLARITY CHARACTERISTICS



### KEY TO SYMBOLS

Red symbols indicate internal characteristics.  
Green symbols indicate external characteristics.

## COLOR

D E F G H I J Faint Very Light Light

## CLARITY

IF WS<sup>1-2</sup> VS<sup>1-2</sup> SI<sup>1-2</sup> |<sup>1-3</sup>

Internally Flawless	Very Very Slightly Included	Very Slightly Included	Slightly Included	Included
------------------------	--------------------------------	---------------------------	----------------------	----------

## LABORATORY GROWN DIAMOND REPORT



July 9, 2025

IGI Report Number **LG696531259**

Description	LABORATORY GROWN DIAMOND
-------------	--------------------------

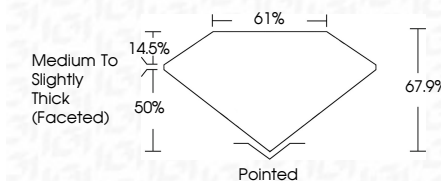
Shape and Cutting Style **SQUARE CUSHION MODIFIED  
BRILLIANT**

Measurements **6.59 X 6.60 X 4.48 MM**

## GRADING RESULTS

Carat Weight **1.54 CARAT**

Color Grade	D
-------------	---

Clarity Grade **VVS 2**

### ADDITIONAL GRADING INFORMATION

Polish **EXCELLENT**Symmetry **EXCELLENT**Fluorescence **NONE**Inscription(s)  LG696531259

Comments: This Laboratory Grown Diamond was created by Chemical Vapor Deposition (CVD) growth process.

Type IIa



© IGI 2020, International Gemological Institute

FD - 10 20

**www.igi.org**

THIS DOCUMENT WAS PRODUCED WITH THE FOLLOWING SECURITY MEASURES: SPECIAL DOCUMENT PAPER, INK SCREENS, WATERMARK BACKGROUND DESIGNS, HOLOGRAM AND OTHER SECURITY FEATURES NOT LISTED AND DO EXCEED DOCUMENT SECURITY INDUSTRY GUIDELINES

July 9, 2025	GI Report No. LG99531259	QUANTUM CUBION MOODER DRILLANT
	5.59 X 4.60 X 4.48 MM	
Carat Weight	1.54 CARAT	
Color Grade	D	
Clarity Grade	VVS 2	
Depth	67.5%	
Table	61%	
Girdle	Medium to slightly Thick (faceted)	
Culet	Pointed	
Polish	EXCELLENT	
Symmetry	EXCELLENT	
Fluorescence	NONE	
Inscription(s)	1681 LG99531259	

**Comments:** Very Clean Diamond was created by Chemical Vapor Deposition (CVD) growth process.

Type IIa