

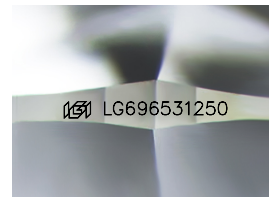
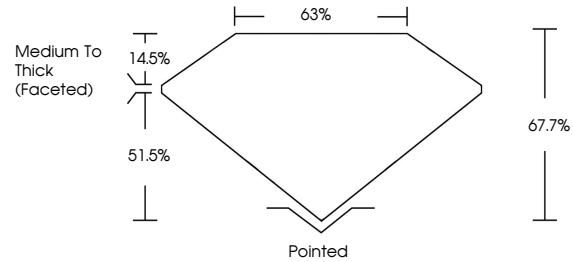


**INTERNATIONAL  
GEMOLOGICAL  
INSTITUTE**

**ELECTRONIC COPY**

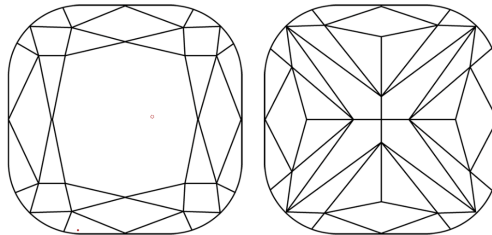
LG696531250  
Report verification at [igi.org](https://igi.org)

## PROPORTIONS



Sample Image Used

## CLARITY CHARACTERISTICS



## KEY TO SYMBOLS

Red symbols indicate internal characteristics.  
Green symbols indicate external characteristics.

## COLOR

D E F G H I J Faint Very Light Light

## CLARITY

IF	WS <sup>1-2</sup>	VS <sup>1-2</sup>	SI <sup>1-2</sup>	I <sup>1-3</sup>

Internally Flawless	Very Very Slightly Included	Very Slightly Included	Slightly Included	Included
------------------------	--------------------------------	---------------------------	----------------------	----------



© IGI 2020, International Gemological Institute

FD - 10 20

**www.igi.org**



THIS DOCUMENT WAS PRODUCED WITH THE FOLLOWING SECURITY MEASURES: SPECIAL DOCUMENT PAPER, INK SCREENS, WATERMARK BACKGROUND DESIGNS, HOLOGRAM AND OTHER SECURITY FEATURES NOT LISTED AND DO EXCEED DOCUMENT SECURITY INDUSTRY GUIDELINES.

LABORATORY GROWN DIAMOND REPORT



July 9, 2025

IGI Report Number LG696531250

Description	LABORATORY GROWN DIAMOND
-------------	--------------------------

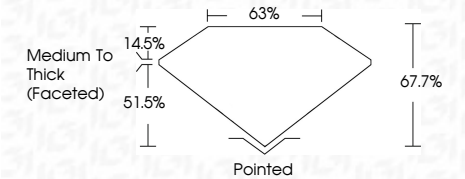
Shape and Cutting Style **SQUARE CUSHION MODIFIED  
BRILLIANT**

Measurements **6.59 X 6.54 X 4.43 MM**

## GRADING RESULTS

Carat Weight **1.50 CARAT**

Color Grade D

Clarity Grade **VVS 2**

### ADDITIONAL GRADING INFORMATION

Polish **EXCELLENT**Symmetry **EXCELLENT**Fluorescence **NONE**Inscription(s)  LG696531250

Comments: This Laboratory Grown Diamond was created by Chemical Vapor Deposition (CVD) growth process.  
Type IIa



IGI

July 9, 2025	SQ1 Report No. LG596531250	SQUARE CUSHION ORIENTED BRILLIANT
6.69 X 6.61 X 4.43 MM	1.50 CARAT	
Carat Weight	D	
Color Grade	VVS 2	65%
Clarity Grade	Medium to Thick (faceted)	
Depth	Polished	
Table	EXCELLENT	
Girdle	EXCELLENT	
	Fluorescence	NONE
	Inscriptions(s)	651 LG596531250
Comments:	This Laboratory Grown Diamond was created by Chemical Vapor Deposition (CVD) growth process.	
	Type IIC	