

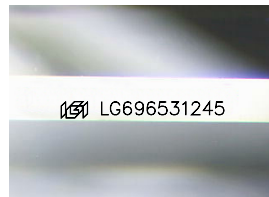
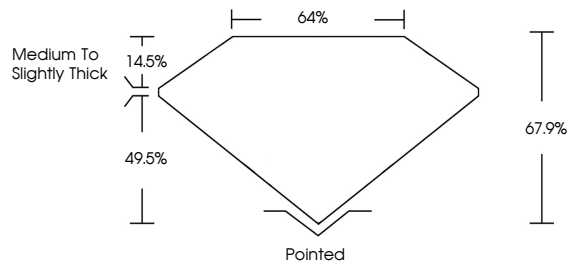


**INTERNATIONAL  
GEMOLOGICAL  
INSTITUTE**

**ELECTRONIC COPY**

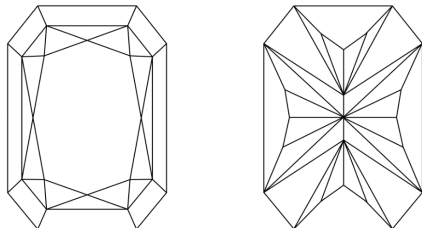
LG696531245  
Report verification at [igi.org](https://igi.org)

## PROPORTIONS



Sample Image Used

## CLARITY CHARACTERISTICS



## KEY TO SYMBOLS

Red symbols indicate internal characteristics.  
Green symbols indicate external characteristics.

## COLOR

D E F G H I J Faint Very Light Light

## CLARITY

IF	WS <sup>1-2</sup>	VS <sup>1-2</sup>	SI <sup>1-2</sup>	I <sup>1-3</sup>
----	-------------------	-------------------	-------------------	------------------

Internally Flawless	Very Very Slightly Included	Very Slightly Included	Slightly Included	Included
------------------------	--------------------------------	---------------------------	----------------------	----------



July 2, 2025

IGI Report Number **LG696531245**

Description	LABORATORY GROWN DIAMOND
-------------	--------------------------

Shape and Cutting Style

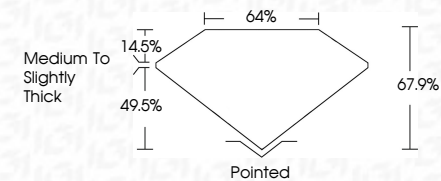
CUT CORNERED  
RECTANGULAR MODIFIED  
BRILLIANT

Measurements **9.78 X 6.89 X 4.68 MM**

## GRADING RESULTS

Carat Weight **2.77 CARATS**

Color Grade **E**

Clarity Grade **INTERNALLY FLAWLESS**

### ADDITIONAL GRADING INFORMATION

Polish **EXCELLENT**Symmetry **EXCELLENT**Fluorescence **NONE**Inscription(s)  LG69653124

Comments: This Laboratory Grown Diamond was created by Chemical Vapor Deposition (CVD) growth process.  
Type IIa



IGI



© IGI 2020, International Gemological Institute

FD - 10 20

**www.igi.org**

THIS DOCUMENT WAS PRODUCED WITH THE FOLLOWING SECURITY MEASURES: SPECIAL DOCUMENT PAPER, INK SCREENS, WATERMARK, BACKGROUND DESIGNS, HOLOGRAM AND OTHER SECURITY FEATURES NOT LISTED AND DO EXCEED DOCUMENT SECURITY INDUSTRY GUIDELINES

<b>July 2, 2025</b>	<b>CUT CORNERED RECT. MODIFIED BRILLIANT</b>	<b>2.77 CARATS</b>	<b>E</b>
<b>IGI Report No. LG69A831246</b>	<b>5.97 X 6.89 X 4.68 MM</b>	<b>IF</b>	<b>67.5%</b>
	<b>Carat Weight</b>	<b>Depth</b>	<b>64%</b>
	<b>Color Grade</b>	<b>Table</b>	<b>Medium to Slightly Thick</b>
		<b>Grade</b>	<b>Pointed</b>
		<b>Clear</b>	<b>EXCELLENT</b>
		<b>Polish</b>	<b>EXCELLENT</b>
		<b>Symmetry</b>	<b>NONE</b>
		<b>Fluorescence</b>	<b>None</b>
		<b>Inscriptions(s)</b>	<b>lgf LG69A831246</b>

**Comments:**  
The Laboratory Grown Diamond was created by Chemical Vapor Deposition (CVD) growth process.  
**Type IIa**