



ELECTRONIC COPY

LG696531015
Report verification at igi.org



June 24, 2025

IGI Report Number **LG696531015**

Description **LABORATORY GROWN DIAMOND**

Shape and Cutting Style **ROUND BRILLIANT**

Measurements **8.52 - 8.56 X 5.24 MM**

GRADING RESULTS

Carat Weight **2.34 CARATS**

Color Grade **D**

Clarity Grade **VVS 2**

Cut Grade **IDEAL**

June 24, 2025

IGI Report Number **LG696531015**

Description **LABORATORY GROWN DIAMOND**

Shape and Cutting Style **ROUND BRILLIANT**

Measurements **8.52 - 8.56 X 5.24 MM**

GRADING RESULTS

Carat Weight **2.34 CARATS**

Color Grade **D**

Clarity Grade **VVS 2**

Cut Grade **IDEAL**

ADDITIONAL GRADING INFORMATION

Polish **EXCELLENT**

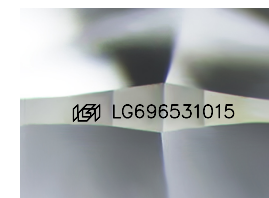
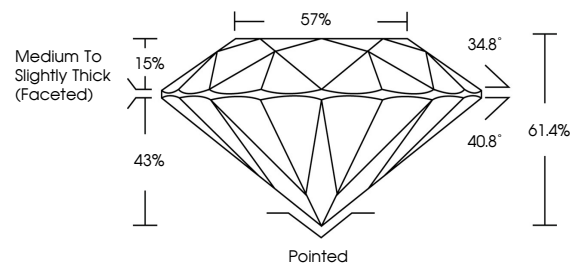
Symmetry **EXCELLENT**

Fluorescence **NONE**

Inscription(s) **IGI LG696531015**

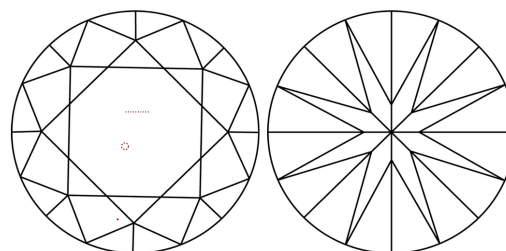
Comments: This Laboratory Grown Diamond was created by Chemical Vapor Deposition (CVD) growth process. Type IIa

PROPORTIONS



Sample Image Used

CLARITY CHARACTERISTICS



KEY TO SYMBOLS

Red symbols indicate internal characteristics.
Green symbols indicate external characteristics.

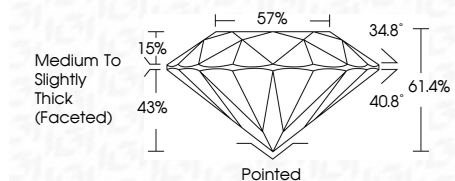
COLOR

D E F G H I J Faint Very Light Light

CLARITY

IF WS¹⁻² VS¹⁻² SI¹⁻² I¹⁻³

Internally Flawless Very Very Slightly Included Very Slightly Included Slightly Included Included



ADDITIONAL GRADING INFORMATION

Polish **EXCELLENT**

Symmetry **EXCELLENT**

Fluorescence **NONE**

Inscription(s) **IGI LG696531015**

Comments: This Laboratory Grown Diamond was created by Chemical Vapor Deposition (CVD) growth process. Type IIa



IGI



June 24, 2025
IGI Report No LG696531015
ROUND BRILLIANT

8.52 - 8.56 X 5.24 MM
Carat Weight
Color Grade D
Clarity Grade VVS 2
Depth 43%
Table 15%
Girdle 61.4%
Medium To Slightly Thick (Faceted)

2.34 CARATS
D
VVS 2
IDEAL
61.4%
57%
Pointed
EXCELLENT
EXCELLENT
NONE
IGI LG696531015

Cut
Polish
Symmetry
Fluorescence
Inscriptions(s)

Comments: This Laboratory Grown Diamond was created by Chemical Vapor Deposition (CVD) growth process. Type IIa