



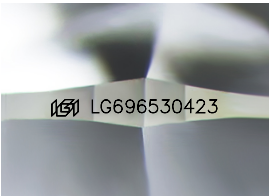
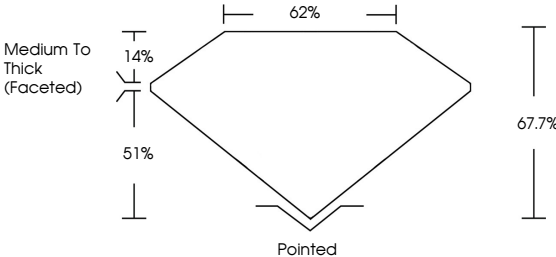
**INTERNATIONAL
GEMOLOGICAL
INSTITUTE**

ELECTRONIC COPY

LABORATORY GROWN DIAMOND REPORT

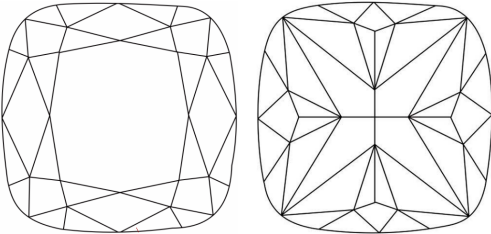
Report verification at [igi.org](https://www.igi.org)

PROPORTIONS



Sample Image Used

CLARITY CHARACTERISTICS



KEY TO SYMBOLS

Red symbols indicate internal characteristics.
Green symbols indicate external characteristics.

COLOR

D E F G H I J Faint Very Light Light

CLARITY

IF WS¹⁻² VS¹⁻² SI¹⁻² I¹⁻³

Internally Flawless	Very Very Slightly Included	Very Slightly Included	Slightly Included	Included
---------------------	-----------------------------	------------------------	-------------------	----------



© IGI 2020, International Gemological Institute

FD - 10 20

www.igi.org

THIS DOCUMENT WAS PRODUCED WITH THE FOLLOWING SECURITY MEASURES: SPECIAL DOCUMENT PAPER, INK SCREENS, WATERMARK, BACKGROUND DESIGNS, HOLOGRAM AND OTHER SECURITY FEATURES NOT LISTED AND DO EXCEED DOCUMENT SECURITY INDUSTRY GUIDELINES

LABORATORY GROWN DIAMOND REPORT



May 30, 2025

IGI Report Number **LG696530423**

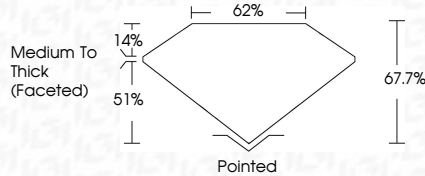
Description **LABORATORY GROWN DIAMOND**Shape and Cutting Style **SQUARE CUSHION MODIFIED
BRILLIANT**

Measurements **5.76 X 5.75 X 3.89 MM**

GRADING RESULTS

Carat Weight 1.01 CARAT

Color Grade

Clarity Grade WS 2

ADDITIONAL GRADING INFORMATION

Polish **EXCELLENT**Symmetry **EXCELLENT**Fluorescence **NONE**

Inscription(s) **151** LG696530423

Comments: This Laboratory Grown Diamond was created by Chemical Vapor Deposition (CVD) growth process.
Type IIa



IGI

May 30, 2025 GI Report No. LG94630423 SQUARE CUSHION MODIFIED BRILLIANT	1.01 CARAT E VS2 617% 62% Medium to Thick (face-out) Pointed EXCELLENT EXCELLENT NONE I91 LG94630423	Carat Weight Color Grade Clarity Grade Depth Table Girdle Culet Polish Symmetry Fluorescence Inclusions(1)	7.75 X 5.75 X 3.95 MM Color Grade Clarity Grade Depth Table Girdle Culet Polish Symmetry Fluorescence Inclusions(1)	Comments: This Laboratory Grown Diamond was created by Chemical Vapor Deposition (CVD) growth process. Type IIa
---	---	--	---	---