



**ELECTRONIC COPY**

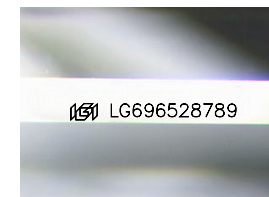
LG696528789  
Report verification at igi.org



May 3, 2025  
IGI Report Number **LG696528789**  
Description **LABORATORY GROWN DIAMOND**  
Shape and Cutting Style **EMERALD CUT**  
Measurements **8.41 X 5.66 X 3.78 MM**

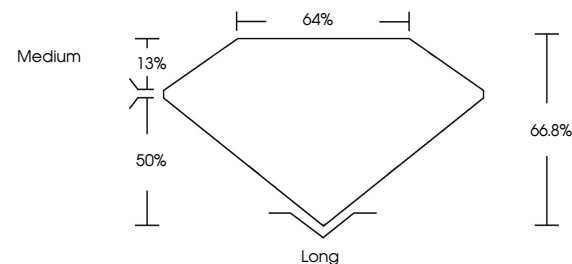
**GRADING RESULTS**

Carat Weight **1.74 CARAT**  
Color Grade **D**  
Clarity Grade **VS 2**

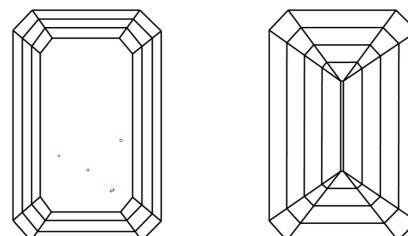


Sample Image Used

**PROPORTIONS**



**CLARITY CHARACTERISTICS**



**KEY TO SYMBOLS**

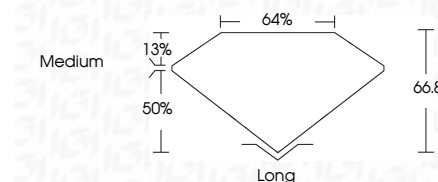
Red symbols indicate internal characteristics.  
Green symbols indicate external characteristics.

**COLOR**

D E F G H I J Faint Very Light Light

**CLARITY**

IF	VS <sup>1-2</sup>	VS <sup>1-2</sup>	SI <sup>1-2</sup>	I <sup>1-3</sup>
Internally Flawless	Very Very Slightly Included	Very Slightly Included	Slightly Included	Included



**ADDITIONAL GRADING INFORMATION**

Polish **EXCELLENT**  
Symmetry **EXCELLENT**  
Fluorescence **NONE**  
Inscription(s) **(IGI) LG696528789**  
Comments: This Laboratory Grown Diamond was created by Chemical Vapor Deposition (CVD) growth process.  
Type IIa



May 3, 2025  
IGI Report No. **LG696528789**  
**EMERALD CUT**  
**8.41 X 5.66 X 3.78 MM**  
Carat Weight **1.74 CARAT**  
Color Grade **D**  
Clarity Grade **VS 2**  
Table **66.8%**  
Girdle **4/5%**  
Medium  
Culet **Long**  
Polish **EXCELLENT**  
Symmetry **EXCELLENT**  
Fluorescence **NONE**  
Inscription(s) **(IGI) LG696528789**  
Comments: This Laboratory Grown Diamond was created by Chemical Vapor Deposition (CVD) growth process.  
Type IIa