



ELECTRONIC COPY

LG696526854
Report verification at igi.org



May 16, 2025
IGI Report Number **LG696526854**

Description **LABORATORY GROWN DIAMOND**

Shape and Cutting Style **HALF MOON STEP CUT**

Measurements **8.70 X 4.63 X 3.09 MM**

GRADING RESULTS

Carat Weight **1.03 CARAT**

Color Grade **FANCY INTENSE YELLOW**

Clarity Grade **VVS 2**

May 16, 2025
IGI Report Number **LG696526854**
Description **LABORATORY GROWN DIAMOND**
Shape and Cutting Style **HALF MOON STEP CUT**
Measurements **8.70 X 4.63 X 3.09 MM**

GRADING RESULTS

Carat Weight **1.03 CARAT**

Color Grade **FANCY INTENSE YELLOW**

Clarity Grade **VVS 2**

ADDITIONAL GRADING INFORMATION

Polish **EXCELLENT**

Symmetry **EXCELLENT**

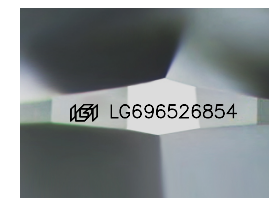
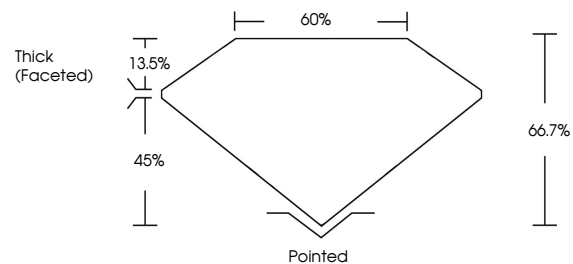
Fluorescence **NONE**

Inscription(s) **LG696526854**

Comments: As Grown - No indication of post-growth treatment.

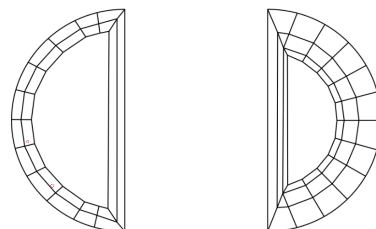
This Laboratory Grown Diamond was created by High Pressure High Temperature (HPHT) growth process.

PROPORTIONS



Sample Image Used

CLARITY CHARACTERISTICS



KEY TO SYMBOLS

Red symbols indicate internal characteristics.
Green symbols indicate external characteristics.

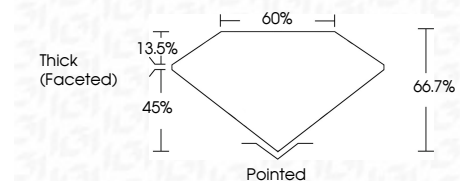
COLOR

D E F G H I J Faint Very Light Light

CLARITY

IF WS¹⁻² VS¹⁻² SI¹⁻² I¹⁻³

Internally Flawless Very Very Slightly Included Very Slightly Included Slightly Included Included



ADDITIONAL GRADING INFORMATION

Polish **EXCELLENT**

Symmetry **EXCELLENT**

Fluorescence **NONE**

Inscription(s) **LG696526854**

Comments: As Grown - No indication of post-growth treatment.

This Laboratory Grown Diamond was created by High Pressure High Temperature (HPHT) growth process.



May 16, 2025
IGI Report No **LG696526854**
HALF MOON STEP CUT

1.03 CARAT
Carat Weight
FANCY INTENSE YELLOW
Color Grade
VVS 2
Clarity Grade
66.7%
Depth
60%
Table
Girdle
Thick (Faceted)

Pointed
Culet
EXCELLENT
Polish
EXCELLENT
Symmetry
EXCELLENT
Fluorescence
NONE
Inscription(s)
 LG696526854

Comments:
As Grown - No indication of post-growth treatment.
This Laboratory Grown Diamond was created by High Pressure High Temperature (HPHT) growth process.