

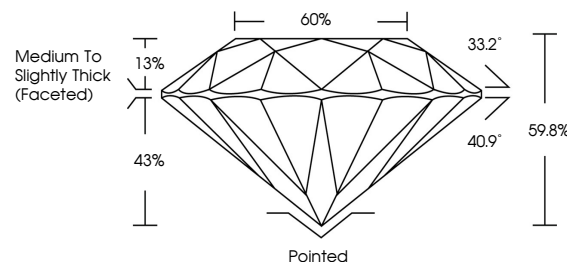


ELECTRONIC COPY

LABORATORY GROWN DIAMOND REPORT

LG696524470
Report verification at lgi.org

PROPORTIONS



CLARITY CHARACTERISTICS



KEY TO SYMBOLS

Red symbols indicate internal characteristics.
Green symbols indicate external characteristics.

COLOR

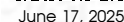
D E F G H I J Faint Very Light Light

CLARITY

IF VS¹⁻² VS¹⁻² SI¹⁻² I¹⁻³

Internally Flawless	Very Very Slightly Included	Very Slightly Included	Slightly Included	Included
------------------------	--------------------------------	---------------------------	----------------------	----------

LABORATORY GROWN DIAMOND REPORT

IGI Report Number **LG696524470**Description **LABORATORY GROWN DIAMOND**Shape and Cutting Style **ROUND BRILLIANT**

Measurements 7.47 - 7.50 X 4.48 MM

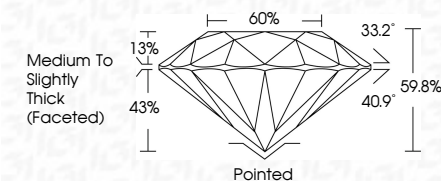
GRADING RESULTS

Carat Weight **1.53 CARAT**

Color Grade D

Clarity Grade **INTERNALLY FLAWLESS**

Cut Grade **IDEAL**



ADDITIONAL GRADING INFORMATION

Polish **EXCELLENT**Symmetry **EXCELLENT**Fluorescence **NONE**Inscription(s)  LG696524470

Comments: As Grown - No indication of post-growth treatment.

This Laboratory Grown Diamond was created by High Pressure High Temperature (HPHT) growth process.



© IGI 2020, International Gemological Institute

FD - 10 20

www.igi.org



June 17, 2025	IGI Report No. LG9A524470	1.53 CARAT
ROUND BRILLIANT		D
17.47 x 7.50 x 4.48 MM		1 F
Color: Weight:		IDEAL
Carat Grade:		59.8%
		60%
		Medium to Slightly Thick (Faceted)
		Polished
		EXCELLENT
		EXCELLENT
		NONE
		1631 LG9A524470
Comments:		
As Grown - No indication of post-growth treatment.		
This Laboratory Grown Diamond was created by High Pressure High Temperature (HPHT) growth process.		
Type IIa		