



ELECTRONIC COPY

LG696514105 Report verification at igi.org



May 7, 2025 IGI Report Number LG696514105 Description LABORATORY GROWN DIAMOND Shape and Cutting Style ROUND BRILLIANT Measurements 7.52 - 7.54 X 4.63 MM GRADING RESULTS Carat Weight 1.62 CARAT Color Grade FANCY LIGHT GREEN Clarity Grade VVS 2 Cut Grade IDEAL

May 7, 2025 IGI Report Number LG696514105 Description LABORATORY GROWN DIAMOND Shape and Cutting Style ROUND BRILLIANT Measurements 7.52 - 7.54 X 4.63 MM

GRADING RESULTS

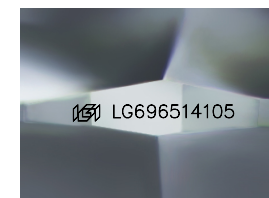
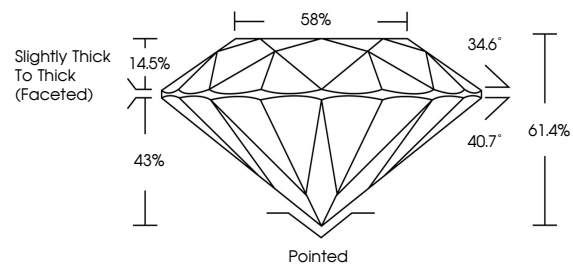
Carat Weight 1.62 CARAT Color Grade FANCY LIGHT GREEN Clarity Grade VVS 2 Cut Grade IDEAL

ADDITIONAL GRADING INFORMATION

Polish EXCELLENT Symmetry EXCELLENT Fluorescence SLIGHT Inscription(s) IGI LG696514105

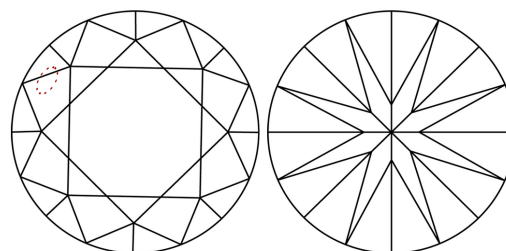
Comments: This Laboratory Grown Diamond was created by High Pressure High Temperature (HPHT) growth process. Indications of post-growth treatment.

PROPORTIONS



Sample Image Used

CLARITY CHARACTERISTICS



KEY TO SYMBOLS

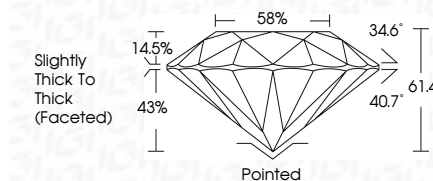
Red symbols indicate internal characteristics. Green symbols indicate external characteristics.

COLOR

D E F G H I J Faint Very Light Light

CLARITY

IF WS 1-2 VS 1-2 SI 1-2 I 1-3 Internally Flawless Very Very Slightly Included Very Slightly Included Slightly Included Included



ADDITIONAL GRADING INFORMATION

Polish EXCELLENT Symmetry EXCELLENT Fluorescence SLIGHT Inscription(s) IGI LG696514105 Comments: This Laboratory Grown Diamond was created by High Pressure High Temperature (HPHT) growth process. Indications of post-growth treatment.



IGI



May 7, 2025 IGI Report No LG696514105 ROUND BRILLIANT 7.52 - 7.54 X 4.63 MM 1.62 CARAT FANCY LIGHT GREEN VVS 2 IDEAL 61.4% 58% Slightly Thick To Thick (Faceted) Pointed EXCELLENT EXCELLENT SLIGHT SLIGHT IGI LG696514105 Comments: This Laboratory Grown Diamond was created by High Pressure High Temperature (HPHT) growth process. Indications of post-growth treatment.