



ELECTRONIC COPY

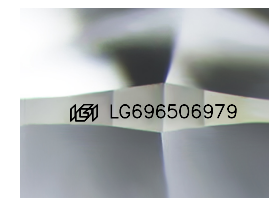
LG696506979
Report verification at igi.org



April 7, 2025
IGI Report Number **LG696506979**
Description **LABORATORY GROWN DIAMOND**
Shape and Cutting Style **ROUND BRILLIANT**
Measurements **10.73 - 10.76 X 6.65 MM**

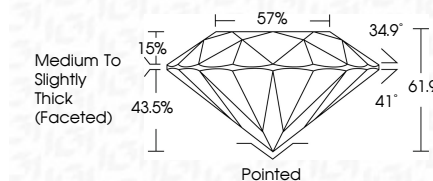
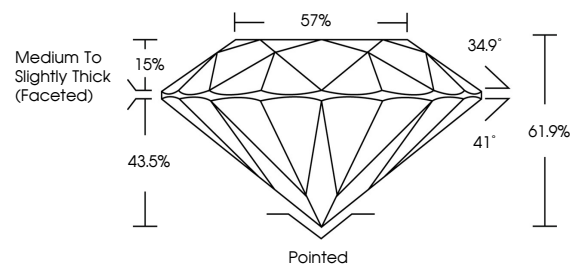
GRADING RESULTS

Carat Weight **4.72 CARATS**
Color Grade **D**
Clarity Grade **VS 2**
Cut Grade **IDEAL**

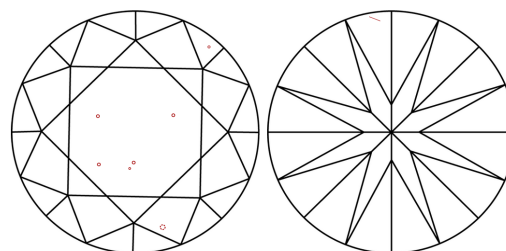


Sample Image Used

PROPORTIONS



CLARITY CHARACTERISTICS



KEY TO SYMBOLS

Red symbols indicate internal characteristics.
Green symbols indicate external characteristics.



COLOR

D E F G H I J Faint Very Light Light

CLARITY

IF VS¹⁻² VS¹⁻² SI¹⁻² I¹⁻³
Internally Flawless Very Very Slightly Included Very Slightly Included Slightly Included Included

ADDITIONAL GRADING INFORMATION

Polish **EXCELLENT**
Symmetry **EXCELLENT**
Fluorescence **NONE**
Inscription(s) **IGI LG696506979**
Comments: HEARTS & ARROWS
This Laboratory Grown Diamond was created by Chemical Vapor Deposition (CVD) growth process. Type IIa



April 7, 2025
IGI Report No **LG696506979**
ROUND BRILLIANT
10.73 - 10.76 X 6.65 MM
4.72 CARATS
D
VS 2
IDEAL
61.9%
57%
Medium To Slightly Thick (Faceted)
Pointed
EXCELLENT
EXCELLENT
NONE
IGI LG696506979

Cutler
Polish
Symmetry
Fluorescence
Inscription(s)

Comments:
Hearts & Arrows
This Laboratory Grown Diamond was created by Chemical Vapor Deposition (CVD) growth process.
Type IIa